

late fall 2016



April Cornell®
live a life of feminine beauty
aprilcornell.com

*table linens with
uncommon grace*

*ready-set-be beautiful
bohemian fairytale dresses*

*harvest headquarters
for happy table scapes*

*gossamer soft cotton voile
nighties to sigh for*

*magical clothes
for little munchkins*

*one world brothers
menswear*

*free
shipping
on orders over
\$150
see back cover
for details*



live richly
with color, beauty & style



a

a. a bohemian fairy tale, the Maharana evokes the sumptuous sophistication of Indian design. Artfully embroidered with delicate gold and silver threads on the bodice, this magnificent dress with yards of soft Indian cotton has a hook-and-eye front closure. Gold embroidery and a gold lurex band on the sleeve is mirrored with an attached lurex band on the hem. Imported Crinkled Cotton
maharana ladies dress
DRA5286C XS-XXL \$179

b. a bloom-tastic, bloom-erific vision brought straight from our design studio in Bloom-ington Vermont. This floral extravaganza fills my heart with joy, and I am left somewhat in awe of its unbridled beauty and power. Cotton
ava tablecloth
TPAVAC 36x36" \$26 54x54" \$49
60x90" \$69 60x108" \$89
88"round \$89

c. classic design never fails to take my breath away—the color and the perfectly rendered floral embroidery that just looks so good atop the chocolate rayon ground and the embroidered floret bursts on the collar points and on the outer sleeve.
sylvia blouse
BLAA5089C XS-XXL \$98
W1-W2 \$108



b

d. this wonderful girls dress with gathered panels creates a dreamy silhouette that's both liberating and delightfully flattering. Imported Rayon
promise girls dress
DR5423C B \$39 K \$49 G \$59
shown with **neige girls petticoat in ecru**
DR5419C B \$29 K \$39 G \$49
and **the noella crown**
ACK5425C \$12
and **the noella bag**
BGK5425C \$19
and **christmas plaid tablecloth**
TPWCHRC 54x54" \$38 60x90" \$64
60x108" \$79

e. uncommon grace—Stunning beauty. Translucent embroidered lace and sophisticated styling exquisitely complements our collection of vintage inspired occasion wear. Imported Nylon Net & Soutache
opera jacket
JKA5073C XS-XXL \$119

f. ready-set-GO ahead and steal the show with simmering elegance! Simple whilst styled to perfection; georgette net, alluring slip, tulip petal sleeves and waterfall gussets. Pure Magic. Imported Nylon Net, Rayon Slip
gatsby dress
DRA5069C XS-XXL \$139



d



e

f

f



c

w

Living Beautifully—how we live is a choice we make everyday. I choose to live with Beauty, to surround, myself with that which gives me joy. Every where I look, my eye is pleased, my heart reassured, the balance of line and color, shape and form—a deliberate reflection of nature's skillful hand. To those of us with eyes that see the inner workings of the world within each swaying bough and falling leaf, this collection is for you, for your home, for your heart.

*For beauty, for a good and loving day.
 All the very, very best,*

April





a W
b



b



a



c

e W



f



i



h



g

a. every print in the entire collection starts with an inspiration—the velvet of the Renaissance Dress is imbued with the super saturated rust, old gold and deep garnet tones of Vermont hillsides come autumn—a sight to behold. Styled with an empire waist, ¾ sleeve and a button on fabric tie for the perfect fit. Imported Rayon Velvet
renaissance dress
DRAA5260C XS–XXL \$169
W1–W2 \$179

b. an extremely elegant piece designed to complement the most discriminating—the Duet is one of my favorite pieces in the collection. Made in irresistibly soft, gotta-feel-it cotton velvet and styled with a uniquely raised shawl collar with intricate stitching detail. A must-have for the season.
duet jacket
JKA5245C XS–XXL \$149

c. a traditional cameo crowned with a pastel floral array creates a most feminine effect in this nod to the Victorian era.
by Randall Johnson Revelation
floral crowned cameo drop earrings
ST31E \$49

d. super soft must have—extra soft cotton jersey, with a highlighted Nehru neckline that's artfully trimmed with one of our signature black and white checks. Imported Cotton Jersey
lakeside t-shirt
TSA5177C XS–XXL \$69
shown with midnight pant on page 19

e. now this is a vest! The kind of stylish statement piece that has people wondering: Where did she get that?! The appliqué embroidered roses are so incredibly substantial and so, so beautiful. Imported Yarn Dyed Cotton
heirloom rose vest
VTAA5090C XS–XXL \$98
W1–W2 \$108

f. love this little number! And I can't wait to wear it this fall with our embroidered leggings. Split mandarin collar, *elongated silhouette. Stunning.* Imported Cotton
ivy blouse
BLA5078C XS–XXL \$89

g. sweet and cozy, the Muse can be your 'go to' topper all season long. Made in our softest wool and lined in silky satin—an unforgettably design!
muse sweater jacket Boiled wool with satin lining.
SWA6005C XS–XXL \$149
available in Pale Rose and Black shown with french beret
ACA5318C one size \$39
available in Black and Olive

h. pink rose glass flowers with Swarovski rhinestones, genuine rose quartz cabochon stones, vintage rose clusters and a genuine pink rhodonite drop on a antique liberty silver finish. 19"–22.5" length
by Randall Johnson Revelation
rosie colored daydreams necklace
LE-56NP \$59

i. for that special engagement when casual just won't cut it, the Soirée stands eager for the spotlight—ready to shine. A faded gold and copper floral entwines the scintillating amethyst velvet on this remarkably elegant garment. Designed in our timeless tunic shape and embellished with antiqued sea beads along the neckline. Generous side slits. Imported Rayon Velvet
soiree tunic
TNA5101C XS–XXL \$119



a

a. smiles are guaranteed to surround you when you dress in our feminine, soul nourishing clothing. Stitched down pleats opening up below the waist, a supple velvet mandarin collar and old fashioned, jewel buttons. Mid-calf length. Imported Rayon Moss Weave
concerto dress
DRA5067C XS-XXL \$129

b. white porcelain oval with pastel floral bouquet in double-setting with light colorado rhinestone border.
by Randall Johnson Revelation
bouquet of plenty earrings
MA-107E \$39



b

c. conservatory tablecloth
TPCONC 36x36" \$26 54x54" \$49
60x90" \$69 60x108" \$89
72x120" \$109 88" round \$89



c



e

w



d

d. celebrating the season with the unpretentious, innocent dresses moms love! A fantastical floral grown from fertile antique ground. Rouched at the center front and embroidered crochet along the hem. Imported Cotton Drill
september girls dress
DR5416C B \$59 K \$69 G \$79
shown with cloud petticoat
DR5385 B \$29 K \$39 G \$49
and josette pantaloons
PT5386 B \$19 K \$29 G \$39
available in Ecru and Antique Red

e. the September tunic boasts the kind of vibrant floral print we live for—antique parchment ground saturated with a classic Indian inspired all-over print. Imported Cotton Drill
september tunic
TNA5222C XS-XXL \$89
W1-W2 \$99
shown with hooded garnet sweater,
see detail online
SWA6008C XS-XXL \$119

f. in the late 1700's, Joseph Marie Jacquard revolutionized the weaving process with an innovation allowing for wide varieties of patterns to be more easily made. Our damask jacquard style textiles incorporate our original designs woven into the fabric for an artfully sophisticated effect.
garden jacquard tablecloth
TPWGAR* 54x54" \$56 60x90" \$89
60x108" \$99

g. queen's court tablecloth
Her Majesty would be pleased to dine on this sumptuous cloth.
TPQUEC 36x36" \$26 54x54" \$49
60x90" \$69 60x108" \$89 72x120" \$109 88" round \$89
available in Black and Chocolate

h. pinecone embroidered topper cloth
TPEPIN 36x36" \$69



f



g



h



pumpkins & pheasants
from April's original pastel



matelassé mat



Sparrow Sunflower Tea Towel
TTSPA1* 19" x 27" \$18

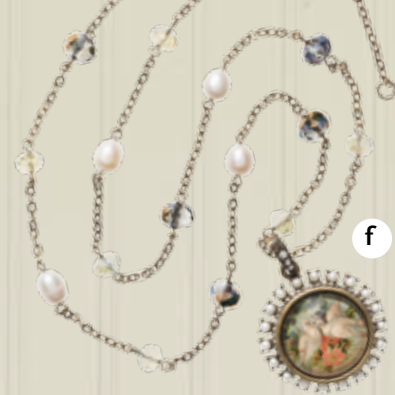
a. profoundly elegant—with the power to transform a night on the town into an event worth remembering! Shimmering velvet trim and translucent lace. Imported Embroidered Nylon Net, Rayon & Velvet
evening vest in olive
VTAA5190C XS–XXL \$98 W1–W2 \$108
available in *Antique and Olive*

b. antiqued parchment ground- bronzed flowers and leaves speak of colors that nourish the heart and sooth the soul. There's a spirit here—a feeling... and it's lovely. Imported Cotton
september dress
DRAA5264C XS–XXL \$119 W1–W2 \$129

c. natures goodness is extended in authentic fashion with this sweet design—it's like that first gust of cool air on a September morning—a reminder to love the journey. Imported Baby Wale Cotton Corduroy
meadow girls jacket
JK5368C B \$69 K \$79

d. we are celebrating the season with the unpretentious, innocent dresses that moms love. Lightweight Cotton Drill
september girls dress
DR5416C B \$59 K \$69 G \$79

e. live with art!—Pastel painted Vermont foliage reflects autumnal twilight from an early setting sun to signs of harvest. Upcoming gatherings remind us of the abundant blessings we share. Here, a family of New England pheasants discover sanctuary in the form of a pumpkin patch that's neatly nestled amidst tall husks and fading grasses.
pumpkins & pheasant pastel tablecloth
TPPUM* 54x54" \$84
pumpkins & pheasant placemats
MPPUM* 14x20" set of four placemats \$48



f. using a 1900's technique the doves are fused to the glass creating movement centered atop a rosette set in opal crystal. 36" long.
by *Sweet Romance*
doves necklace
SR_N1116 \$49

g. so versatile! Romantic, practical, beautiful and elegant. Wear it to work over pants or as the perfect topper for a dinner party. What more could you want? Imported Crinkled Cotton Voile
dove jacket
JKAA5266C XS–XXL \$119
W1–W2 \$129
available in *Black, Charcoal and Antique Red*

h. looks good with everything! These leggings are a 'must have' for pairing with everything from tunics to tee's and all this seasons cute cami's and dresses. Imported Cotton Jersey
meadow leggings in navy
PTA5281C XS–XXL \$59

i. vintage clover locket necklace
by *Sweet Romance*
SR_N1394 16" \$79

j. a piece you treasure for years and one day pass on to someone you really, REALLY love. Gorgeous print delivered on supple—not too thick wool, a wonderful combination. Imported Printed Wool
conservatory cape
CPA5086C one size \$149

k. that extra special sweater you just can't live without! Designed with a subtle diamond pattern throughout and styled with a ribbed, rounded hemline—sooo good!
Acrylic, Nylon, Wool 45/45/10
cozy sweater in wine
SWA6015C XS–XXL \$109
available in *Wheat and Wine*

l. twirl to your heart's content! Silky soft shantoon rayon jacquard styled with an easy elastic waist for comfort and six panels for a generous hem sweep, a skirt to put all other skirts to shame.
lyric skirt
SKA5247C XS–XXL \$98





b



a



c

a. the Heirloom Rose pure linen is romantic by nature, delicate by design and a classic modern day masterpiece. Generously appointed with our timeless lace trim, this textile is an 'instant heirloom' and will be cherished for years to come.
 Linen with Crochet Lace Trim
heirloom rose linen tablecloth
TPLHER 54x54" \$98 60x90" \$149
heirloom rose linen napkin set
NPLHER18* 18x18" set of four \$49
shown with luxurious linen jacquard napkin in cranberry available online
shown with rose napkin rings
NRMROSC* set of four \$26

b. in the late 1700's, Joseph Marie Jacquard revolutionized the weaving process with an innovation allowing for wide varieties of patterns to be more easily made. Our damask jacquard style textiles incorporate our original designs woven into the fabric for an artfully sophisticated effect.
luxurious linen jacquard tablecloth in cranberry
TPJLXU* 54x54" \$89 60x90" \$119
available in Cbarcoal, Linen and Cranberry

a



d



e

c. named after a really sweet girl—my daughter-in-law--this dress is perfect for the classic April Cornell customer. The Camille is utterly romantic with its lovely shawl collar, embroidered buttons on the front, sweetly contrasting embroidered net hem, and harvest-inspired palette. Tea length. Printed Rayon
camille ladies dress
DRAA5032Z XS-XXXL \$98

d. from earth's bounty—the natural dyes of the pomegranate were used to make this hand block printed treasure. A high yoke with pleats and a generously cut swing shape body. Perfect! Cotton Block Print
eartha ladies tunic
TNA5285C XS-XXXL \$79

e. named for a town that's always been close to my heart, the Santa Fe cape masterfully combines exquisite textile design with New Mexico inspired styling for a result that is simply stunning. Structured with a single toggle closure and enhanced by the fringe detail, this unique garment is sure to turn heads wherever you may roam.
 Acrylic Tapestry Weave
sante fe cape
CPA6552C one size \$74
shown with lovely blouse in ecru
BLA5151C XS-XXXL \$69

f. necklace is lace over faceted 25x18mm crystal stone, with an etched & gilded intaglio 18x13mm glass oval dropped below and a genuine freshwater hand-wired pearl drop, dropped on brass chain plated antique liberty silver finish, adjustable up to 20"
by Randall Johnson Revelation
duchess lace necklace
G-34N \$49

g. black porcelain oval with pink rose in double-setting with hematite rhinestone border.
by Randall Johnson Revelation
victorian rose earrings
MA-107E \$39

h. bohemian by nature- beautiful by design, the Jaipur Dress is what I'm all about come fall. I'll pair this with embroidered leggings and some of my favorite jewels on more than one of my special soirée's this season and trust me- it's fabulous. Ticking stripe base with classic block print pattern, stunning yet subtle embroidered vine on either side of the split neck, pieced in bodice. Bias hem trim. Jaipur Cotton
jaipur ladies dress in rust
DRA5062C XS-XXXL \$149



f



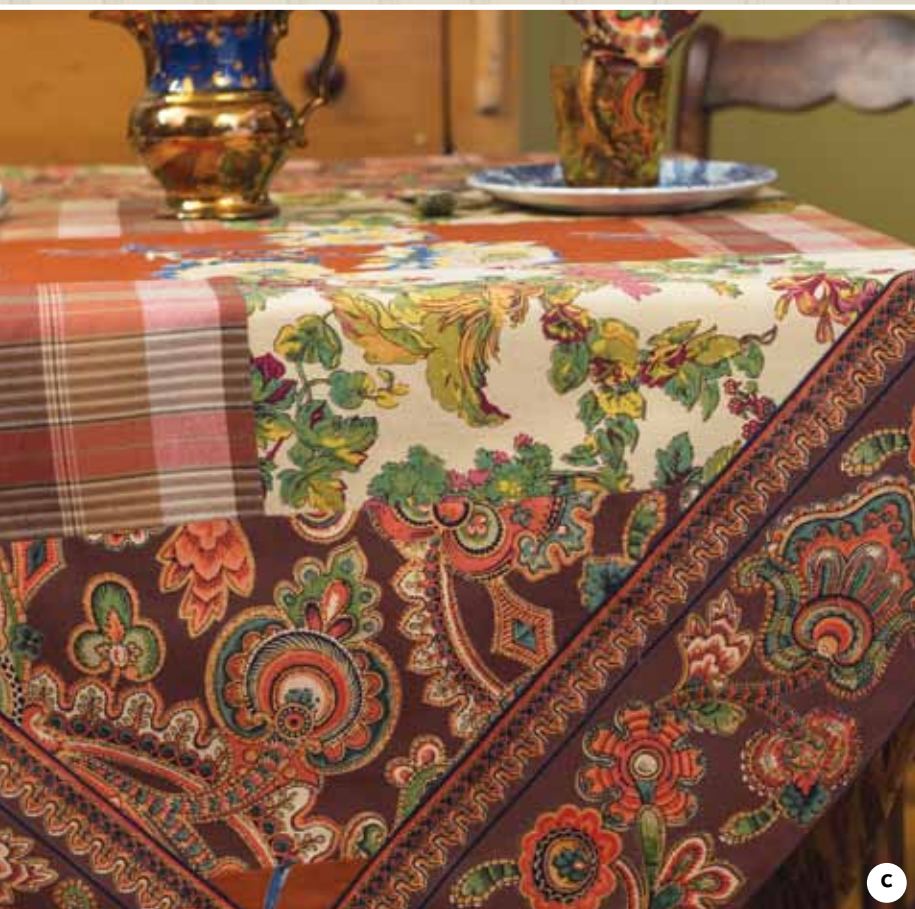
g



h



a



c

a. queen's court tablecloth Her Majesty would be pleased to dine on this sumptuous cloth.

TPQUEC 36x36" \$26 54x54" \$49 60x90" \$69
60x108" \$89 72x120" \$109
available in black and chocolate

b. queen's court placemat

MPQUEC 14x28" set of four \$38
shown with queen's court napkin available online
NPQUE2oC 20x20" set of four \$29
available in black and chocolate
shown with essential napkin in chocolate
NWESS18* 18X18" set of four \$24

c. harvest riches patchwork tablecloth

TPHAR 54x54" \$109

d. harvest riches patchwork placemat and napkin

MPQHARC 14x20" set of four \$48
NPHAR2oC 20x20" set of four \$29
shown with essential napkin in chocolate
NWESS18* 18X18" set of four \$24
shown with harvest button napkin rings
NRB4HAR* set of four \$19

e. like all of our essential our Lacey Tee is essentially pretty! A beautiful blend of cotton and rayon that softly drapes the body in sublime softness.

lacey t-shirt

TSA5196C XS-XXL \$49
available in brown, smoke, and ecru

f. this knit jumper is absolutely what you need for fall. Butter soft, without so much as an ounce of itch. The Dolly has this cool little retro vibe going and looks delicious paired over the everyday tee and tights or our tapestry leggings.

Wool and Nylon 80/20

dolly jumper

DRA60o4C XS-XXL \$89

available in brown and lt aqua
shown with tapestry leggings on page 24

g. timeless, whimsical beauty

by Randall Johnson Revelation

discoveries necklace

PLN12 29.5", 5.5" extension \$119

h. the delicious Dew Sweater makes my heart smile

The knit we have chosen is so soft I have a feeling you won't want to take it off all season long, and the scrumptious styling is so sweet you may want two in case one gets misplaced.

dew sweater

SWA6o14C XS-XXL \$98

available in lt peach and lt aqua

shown with lacey t-shirt

TSA5196C XS-XXL \$49

shown with carly pant

PTA5o84C XS-XXL \$79

i. what a pretty dress! From the decidedly delicate print to the vivaciously vintage design, the Posey is that one of a kind feminine frock we truly love to create. The shaped waist is so flattering and the lace collar and lace insets on the bodice and trimming the sleeve are absolutely to die for.

Made in the finest flowing rayon mossweave and finished with a self fabric tie to ensure a fabulous custom fit.

posey dress

DRAA5134C

XS-XXL \$119

W1-W2 \$129



e

f



e



g



h



h



i

w



a



b



c



d

e

f

w

w

a. safari kantha tablecloth

A patchwork of vintage textiles.
TPSAFC 54x54" \$109

b. sun follower tablecloth

TPSUNC 36x36" \$26 54x54" \$49 60x90" \$69 60x108" \$89 88" round \$89
available in black and rust

c. nature study placemat or napkin

MPQNATC 14x20" set of four \$48
NPNAT20C 20x20" set of four \$29
shown with antique button napkin rings
NRB4ANT* set of four \$19
shown with essential napkin in ecru
NWESS18* 18X18" set of four \$24

d. deliciously delightful—a wonderful rendering of a floral jacquard crafted in the silkiest soft, perfectly draping rayon weave. Rayon, Shantoon Jacquard lyric blouse

BLAA5246C XS-XXL \$89
W1-W2 \$99

e. profoundly elegant—with the power to transform a night on the town into an event worth remembering! Shimmering velvet trim and translucent lace. evening vest in olive

VTAA5190C XS-XXL \$98

W1-W2 \$108

shown with maharani scarf

SFA5081C one size \$39

available in antique red, olive and mocha

f. twirl to your heart's content! Silky soft rayon shantoon jacquard styled with an easy elastic waist for comfort and six panels for a generous hem sweep, a skirt to put all other skirts to shame.

lyric skirt
SKA5247C XS-XXL \$98

g. nature study tablecloth

For the contemplative nature lover.
TPNATC 36x36" \$26 54x54" \$49 60x90" \$69

h. reverie antique runner

RNREVC 13x72" \$34

i. reverie antique tablecloth

TPREVC 36x36" \$26 54x54" \$49 60x90" \$69 60x108" \$89 72x120" \$109 88" round \$89



g



h



i



a

a. vivacious, 70s-inspired—the Spirit features a sweetheart neckline with a red indigo block print. Tiny gathers below the waist give the skirt an easy, appealing flow.
Indigo Block Print Cotton
spirit dress
DRA5283C XS–XXL \$198

b. stunning- and the shape is great! With a flattering Nehru collar and V-shaped neckline, not to mention a channeled belt below the drop waist. Rayon
birdie short dress
DRAA5160C XS–XXL \$84
W1–W2 \$94
shown with **tapestry leggings**
PTAA5027C XS–XXL \$59
W1–W2 \$69
available in antique red, black, brown, old rose, olive, smoke



b w
c

c. reminiscent of a turn of the century Parisienne cabaret! Self stripe cotton trimmed on all sides with exquisite black lace... Voila! Cotton with Rayon Lace Trim
colette scarf
SFA5306C \$39

d. you will never (EVER!) throw this away! A dash of lurex and a splash of detail make this easy shape altogether unforgettable! Cotton
Distressed Wash everyday tunic
TNAAS231C XS–XXL \$79
W1–W2 \$89
available in red and smoke
shown with **tapestry leggings** on page 24

e. so versatile! Romantic, practical, beautiful and elegant. Wear it to work over pants or as the perfect topper for a dinner party. What more could you want? Crinkled Cotton and Embroidered Net Border
dove jacket
JKAA5266C XS–XXL \$119
W1–W2 \$129
available in black, charcoal and antique red
shown with **tapestry leggings** on page 24

f. flea market finds, vintage textiles. Calico prints, ticking stripes of indigo and Indian inspired hand block prints breathe once more in this delectable design.
flea market patchwork tablecloth
TPFLEC 54x54" \$109



d w
e w

g. this is one of my most cherished of the classic color combinations! Hand blocked indigo is not only beautiful- almost as importantly it represents a long tradition of unparalleled craftsmanship we are honored to continue. Perfect for creating the soothing, sophisticated sanctuary of your dreams.

h. blue flower teapot with cup for one Oh sweet afternoon
9553 \$34

i. a collectible! Resin pieces, cameos, suede ties, silk ribbons, quartz, glass beads, antique gold colored plated finding. Length 22-25".
by Jill Schwartz
in full bloom necklace
R16N \$139



f



g



h



i

e w

create the look
-the duster, the leggings
& the fabulous necklace



a

a. i am so inspired by the timeless fashions of days gone by. The Cecilia Dress finds its roots in the elegant Edwardian period with its shaped waist and pieced-in lace insets, its pintucked embellishments on the bodice, and a delicate crochet trim on the neckline and sleeve opening. Romance!
Rayon Moss Crepe
cecilia dress
DRA5167Z XS-XXL \$98

b. amethyst lamp work with white flowers set in a black diamond rhinestone border dropped from faceted glass hematite stone.
by Randall Johnson Revelation
amethyst blossom earrings
MA-133E \$44

c. deep hues of garnet set off our autumn palette. Truly regal!
by Randall Johnson Revelation
regal garnet dangle earrings
B126E \$44



c



b



d

e

d. a delightful blouse for a variety of occasions. Pretty polka dot pattern, rounded peter pan collar and a subtle pleating embellishment on the bodice—the definition of uncommonly simple beauty. Rayon Distressed Wash
agatha blouse
BLA5235C XS-XXL \$89

e. how many ways can you wear a classic item like the London Skirt? Simple, graphic floral print with a touch of inset lace. Rayon Distressed Wash
london skirt
SKA5163C XS-XXL \$79

f. a timeless treasure for your home—enhance your life through uplifting color inspired by the natural world. From April's brush to your table.
robin in multi tablecloth
TPROB* 54x54" \$84

g. simply beautiful—An uncommonly easy and elegant piece, just putting it on will brighten up your day!
Cotton Cambric
ivy stripe tunic
TNAA5112C XS-XXL \$89 W1-W2 \$99



f



g

w

h

w

i

w

h. the kind of easy, much loved top that will undoubtedly be a mainstay in your closet for years to come. The Vivian is versatile too—wear it with leggings, jeans or even open over a cute camisole. Cotton
vivian ladies tunic
TNAA5269C XS-XXL \$64
W1-W2 \$74

i. you will never (EVER!) throw this away! A dash of lurex and a splash of detail make this easy shape altogether unforgettable! Cotton
Distressed Wash
everyday tunic
TNAA5231C XS-XXL \$79
W1-W2 \$89
available in smoke and antique red

k. black gingham check, faded blue cotton chambray—this reversible dress is double the fun! Shirt collar is trimmed with delicate black lace as is the button placket. It's reversible!
Double Weave Reversible Cotton
madeline dress
DRA5213C XS-XXL \$129
shown with **tapestry leggings**
PTAA5027C XS-XXL \$59
W1-W2 \$69
available in antique red, black, brown, old rose, olive, smoke



k

l. our classic 'pocket dress' takes shape with a sweet little polka dot pattern that's as easy and comfortable as it is pretty. Made in our super silky rayon and has a tiny little contrast trim that also matches the button on ties with three embroidery embellished fabric covered buttons and light gathers below the waist for a flattering silhouette.
chryss dress
DRA5076C XS-XXL \$109

m. a gorgeous design that effortlessly blends simple elegance with uncommon hand crafted detailing. Made in our silky soft rayon blend for a delightfully flattering silhouette—almost a skirt!
midnight pant
PTA5139C XS-XXL \$89



l

m

*peerless cotton voile,
fine detailing,
an April Cornell
nighty is forever*



e. a classic old fashioned cotton nightgown for a woman who knows how to treat herself right. Truly a lovely style, the Hannah showcases delicate embroidery on a bodice bordered by crochet lace, has twelve pleats below the yoke and is trimmed on the hemline with a scalloped edge, lace embellishment in tulle. A rare find in today's marketplace.
hanna nighty
 NTAA5281C XS-XXL \$98
 W1-W2 \$108

f. gossamer soft cotton voile truly makes for unmatched comfort. Swiss dot embroidery with V-shaped pleat detailing and crochet lace insets for a truly magnificent design.
evilia nighty
 NTA5287C XS-XXL \$79

g. golly, where do I start? The Patience is so impressive- she's kind of a masterwork of the most delicate craftsmanship around, is highlighted by an unparalleled attention to detail and, ultimately, represents a romantic vision of the world we are blessed to inhabit. Enjoy, for you will not see her likes elsewhere.
patience nighty
 NTAA5254C XS-XXL \$89
 W1-W2 \$99

h. a choice design with exquisite detailing! Carefully rendered on the finest cotton we could find with embroidered florets framed by parallel layers of crochet lace insets.
honesty nighty
 NTAA5265C XS-XXL \$79
 W1-W2 \$89



a. the Poetry nighty is that rare manifestation of embroidered lace design and cotton comfort with a song all it's own, just waiting to be heard.
poetry nighty
 NTA5250C XS-XXL \$98
 shown with **julietta nighty**

b. an uncommonly romantic nightgown that also happens to be made in the most comfortable cotton on earth. The Julietta is highlighted by embroidered lace insets around the bodice and back, cotton net sleeves and an elegant design.
julietta nighty
 NTA5259C XS-XXL \$129

c. indulge yourself in the dreamy escape that is the Aurencia nighty. Crafted in our skin soft Indian rayon and expertly embellished with glorious floral embroidery on the yoke, this garment is lightly gathered at the bust for an alluring silhouette and comfortable drape.
aurencia nighty
 NTAA5329C XS-XXL \$89
 W1-W2 \$99

d. for the most refreshing slumber delivered from cloud crafted comfort, the Cloud nighty is just what the designer ordered. Of course, this garment is made in our peerlessly soft Indian cotton that I've spent a lifetime sourcing and refining. She has our trademark tonal embroidery on either side of the split neckline below which a teeny tiny ruffle releases to gentle gathers and a relaxed body below.
cloud nighty
 NTA5271C XS-XXL \$89





j. jacob's court linen tablecloth
TPLJOC 54x54" \$98 60x90" \$149

k. victorian rose linen tablecloth
TPLVIC 54x54" \$98 60x90" \$149

l. luxurious linen jacquard tablecloth
TPJLUXU 54x54" \$89 60x90" \$119
available in charcoal, linen and cranberry

m. angelic embroidered tablecloth
TPEANG 54x54" \$98



c. every woman needs at least one (*if not two or three*) comfortable slips in her wardrobe. A supple cotton knit designed to flow seamlessly under a variety of shapes and materials.

crème slip
SLAA5046C XS-XXL \$49
W1-W2 \$59

d. this super supple, silky rayon garment features subtle spaghetti straps, lace trim and a drop waist for a comfortable and alluring silhouette.

rebecca slip
SLAA5275C XS-XXL \$59
W1-W2 \$69

e. so timeless, so old fashioned, our Neige girls petticoats are extremely popular because they are such a hard-to-find shape that is so special and cherished. It looks absolutely perfect under all of our pinafore dresses and provides all the loving artistry, modesty and warmth she might possibly need. Cotton.

neige petticoat
DR5419C B \$29 K \$39 G \$49

f. 'cute as a button' camaloons for munchkins! Pure cotton, darling details and sublime smiles to remember forever. You're welcome.

little girls camaloon
JS5421C K \$39 G \$49

a. easy ecru is that essential underpinning. Super supple and delectably detailed with a pieced in, sublimely shaped bodice. The must-have item for layering under our lightweight dresses! Rayon with Lace.

valerie slip
SLA5290C XS-XXL \$64

b. fall in love at first sight with the Romance Camisole, a cotton belle chose, with hand-crafted bodice. Indian cotton, gentle layers of embroidered lace on the hem. Criss-cross lace tie.

romance camisole
CMA5123* XS-XXL \$69
shown with **nanette half slip**
SLA5261C XS-XXL \$79

pure linen & scads of
crochet lace—truly uncommon beauty



a W



b W

a. rendered in deliciously soft rayon jersey and styled with a graceful cowl neckline and alluring ¾ sleeves. A versatile blend of comfort and style! Rayon/spandex. 94/6.

dancing t-shirt
TSA5141C XS-XXL \$49
W1-W2 \$59 (Black only)
available in antique red, black and ecru

b. a 'must have' for pairing with everything from tunics to tee's, our Tapestry Leggings are super comfy and artfully embellished with April's trademark floral embroidery. Cotton jersey with spandex. 96/4.

tapestry leggings
PTAA5027C XS-XXL \$59 W1-W2 \$69
available in olive, smoke, black, old rose, antique red and brown

c. pantaloons are perfect for layering under dresses for a romantic, Victorian feel. Made in specially curated Indian cotton, with a scalloped hem made from beautifully finished crochet lace.

pantaloons pant
PTA5233* XS-XXL \$59
W1-W2 \$69 (Ecru Only)
available in antique red, smoke, pale rose and ecru

d. vintage curiosity necklace by Sweet Romance 34"-39" in length SR_N1434 \$119

e. carefully crafted in our deliciously soft cotton jersey and styled with an easy scoop neckline and alluring ¾ sleeves. A versatile blend of comfort and style! Cotton jersey.

everyday t-shirt
TSA5279* XS-XXL \$49
available in ecru and black

f. supple, subtly textured cotton in a peasant shape. Rouching from the shoulder to the neckline, a criss cross drawstring and button embellishments. Cotton crepe.

market blouse
BLAA5108C XS-XXL \$74
W1-W2 \$84
available in dark moss and rust shown with tapestry leggings

g. an easy camisole for lounging at home or for layering underneath sheer garments, the Essence is an essential underpinning for a fashionably versatile wardrobe. Rayon.

essence camisole
CMA5149* XS-XXL \$39



d



a

c



c

W



e



f



f

b



c



g

start at the beginning with your underpinnings!



a



b w



c

d



e

a. getting married beneath a four hundred foot waterfall? This is *THE DRESS*—a quintessentially feminine design, with exquisite embroidered lace and an alluringly simple silhouette. Nylon/cotton 70/30 Rayon slip.
ribbon flower dress
DRA5004C XS-XXL \$229

b. sumptuous detailing from top to bottom! Exquisite embroidery on a swiss dot framed bodice and a square cut neckline finished with delicate trim throughout. Heavenly. Nylon net shell. Rayon lining.
mariposa blouse
BLAA5129C XS-XXL \$129
W1-W2 \$139 (antique red only)
available in mocha or antique red shown with **mariposa skirt**
SKA5130C XS-XXL \$129

c. transported me to simpler times! An old rose pallet and floral design are just right for a dress augmented by embellishment on the bodice and crochet trim along the neckline and hem. Rayon moss crepe.
darling girls dress
DR5351C B \$79 K \$89 G \$99

d. i just want to eat up the darling little legs that are going to look so precious in these!
Cotton/nylon net. 54/46.
sorbet girls legging
PT5404C K \$29 G \$39
available in antique ecru and antique red

e. heaven on earth for an occasion to cherish forever! Just absolutely darling—with an abundance of delightfully appointed crochet trim and luscious lace ruffles. Cotton/nylon net. 54/46. Cotton lining.
 victoria girls dress
DR5400C B \$88 K \$98 G \$108

f. a perfect collection of hand-colored flowers in frame—with genuine freshwater rice pearls, green aventurine beads and amethyst glass flowers, brass finding plated antique liberty silver finish.
by *Randall Johnson Revelation*
picture perfect earrings
PK-1E \$44

g. hopeless romantic? Beautiful floral print falls from lovely moss crepe rayon. Embellishments detailing the bodice include pintucks, bands of crochet lace and an elegantly shaped waist. Two



f



g w

tiered skirt. Crochet trim. Rayon moss crepe.
nadia dress
DRAA5027Z XS-XXL \$98
W1-W2 \$108

h. profoundly elegant. Shimmering velvet trim highlights artfully embroidered—romantically luminous lace. A scintillating silhouette straight from your wildest dreams. 54/46 cotton nylon.
antique evening vest
VTAA5190C XS-XXL \$98
W1-W2 \$108
available in antique or olive

i. a hint of Victorian, a dash of modern, stunning attention to detail—and voila, you have the Ribbon Flower blouse. Embroidered ribbons and bows add a touch of whimsy to this show stopper! Nylon/cotton 70/30. Rayon lining.
ribbon flower blouse
BLA5186C XS-XXL \$98

j. sumptuous design creates memorable styling worthy of life's most magical moments. Featuring embroidery you need to see to believe—it's just beautiful. Nylon/cotton 70/30. Rayon lining.
ribbon flower skirt
SKA5185C XS-XXL \$129



h

i

quintessentially feminine



a

b



c



d



a

a. that extra special sweater you just can't live without! Designed with a subtle diamond pattern throughout and styled with a ribbed and rounded hemline—sooo good! Acrylic/nylon wool. 45/45/10. **cozy sweater SWA6015C XS–XXL \$109** available in *wheat or wine*

b. ravishingly romantic dusty rose! Styled in a classic A-line, 'prairie skirt' shape and accented by elegant inset lace, this skirt pairs beautifully with our vintage inspired blouses. Rayon moss crepe. **darling skirt SKA5233C XS–XXL \$98**

c. add extra smiles with every wear! Catering to the artistically natured amongst us this distressed cotton weave releases to light gathers beneath the yoke—an enticing silhouette. **georgie blouse BLA6560C XS–XXL \$59** available in *coral or latte*

d. classic Cornell color and pattern playfully mingle in this artful accessory. Created to bring joy to the wearer, our original prints are inspired by the wondrous beauty of nature. 70/30 wool gauze and nylon. **rose nouveau scarf SFA5236C one size \$79**

e. delectably made in a specially dyed, laundered cotton velvet with princess seams and shaping throughout this is the kind of jacket you actually can't wait for a cold enough day to wear. **autumn jacket JKA5024C XS–XXL \$209** shown with **sylvia blouse BLAA5089C XS–XXL \$98** W1–W2 **\$108**

f. the print we've selected for the Camille pant is so rich and dense as delivered on this mouth watering, deep chocolate ground. I can't wait to get creative while wearing this in the cool, crisp Vermont autumn. Styled for peerless comfort, our straight legged pant complements the wearer in just the right, easy going, effortless fashion. Elastic waist. Rayon. **camille pant PTA5211Z XS–XXL \$69**

g. very vintage, the scarf is made of floral lace and swiss dot net. Wear it every day and feel fabulous! Cotton/nylon. 70/30. **whisper scarf in ecru SFA5311C one size \$39**

h. wonderful! made in a super soft knit we discovered that just had to be manifested in this awesome and unique shape. Tortoise shell buttons and faux sleeves- sublime! Acrylic/wool. 70/30. **woodland cape sweater SWA6003C XS/S, M/L, L/XL \$129** available in *oatmeal and brown*

i. plated brass, suede tie, fabric ribbon, mother of pearl, coral, amazonite, antique gold color plated finding and chain. *by Jill Schwartz* **vintage blooms earrings Ro7E \$79**

j. sparrow softly soaring brass and antique silver with faceted green aventurine briolette, epidote, new jade & peridot beads. *by Randall Johnson Revelation* **singing sparrow earrings G-31E \$59**

k. a classic shape for a classic look that you can only get from April. First, the Nicole is presented in a lightly textured stripe woven into the purest Indian cotton. Then there's the gorgeous eyelet and scalloped edging of the attached lace collar and ¾ cuffs, further mirrored at the hemline. Finally there's that extra added detail of a tiny cutwork floral design on the buttons.

nicole blouse BLAA5277C XS–XXL \$69 W1–W2 **\$79**

l. super soft, baby wale corduroy pant printed with a stunning bouquet of bursting Art Deco flowers and fluttering songbirds. The Aviary has an easy going elastic waistband for a comfortable fit.

aviary pant PTA5183Z XS–XL \$69



e

f



i



j



g



h



k

w

l





a **W**



b

a. return to romantic styling!
Super saturated rose hewn hues and signature floral embroidery on the shaped bodice deliver a garment of unparalleled artistry. Rayon moss crepe.
darling dress
DRAA5226C XS-XXL \$139
W1-W2 \$149

b. 'coverup' is a misnomer for this marvelous garment—the Antiquity will be noticed, admired- and yes, even coveted by those in the know (or your sticky fingered sister!). An heirloom caliber design.
Cotton/nylon 80/20.
antiquity coverup
CUA5100C XS-XXL \$79

c. wildly romantic—with organza, crystal, and semi precious gems a real treasure with an adjustable chain from 15.5 – 17.5"
By Jill Schwartz
coeur bird necklace
H41N \$144

d. delightful surprises are in store when nature is your muse — warm, unfettered hand that tenderly guides a paint brush's caress, the Wildflowers print speaks to lovers of nature and beauty alike. Cotton.
wildflowers cushion cover
CPWIL20C 20x20" \$24

e. undeniably pretty, perfectly cozy and styled with all the texture and drape you could ask for. The Sweetheart pant will steal your heart away paired with our beautiful blouses. Rayon moss crepe.
sweetheart pant
PTA5153C XS-XXL \$98
shown with ribbon flower blouse
BLA5186C XS-XXL \$98

f. red & white teapot
old fashioned charm
9225C \$29
red & white cup and saucer
9260C \$12.95
roses tea cozy
TCROSC one size \$14

g. victorian rose napkin set
NPVIC20C 20x20" set of four \$29
peony metal napkin rings
NRMPEOC* set of four \$26
shown with essential napkins in pink
NWESS18 set of four \$24

h. victorian rose placemat
MPQVICC 14x20" set of four \$48

i. just right for these glorious days and long enough to be worn with leggings or pants. The beautiful real indigo block print makes this a beautiful addition to your wardrobe. Indigo Block Print Cotton.
spirit tunic
TNA5284C XS-XXL \$89

j. victorian rose tablecloth Our vibrant handscreened table linens are internationally renowned for their nature inspired beauty & artist driven colors. Hand screened cotton floral.
TPVICC 36x36" \$26 54x54" \$49

hi!

i

j



add touches of brocades, velvets and delicate tulle—

a. sumptuous detailing from top to bottom!

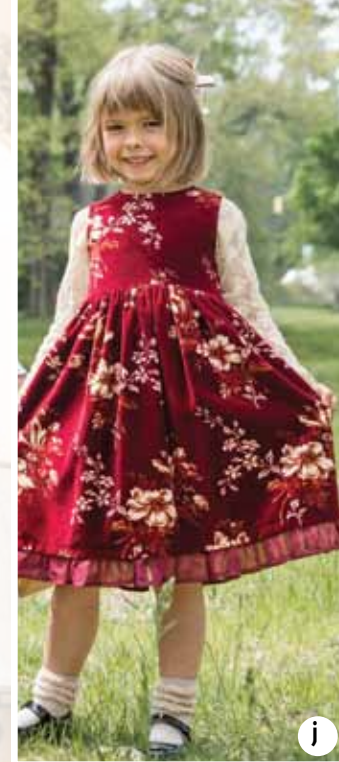
Exquisite embroidery on a swiss dot framed bodice and a square cut neckline finished with delicate trim throughout. Heavenly. Nylon net shell lining. Rayon. **mariposa blouse** BLAA5129C XS-XXL \$129 available in antique red or mocha W1-W2 \$139 available in antique red only

b. sumptuous styling and stunning design—

featuring gossamer tulle lined with radiant shantoon and is accented by tiers of ruffles from top to bottom. Nylon with rayon lining. **festive skirt** SKA5011C XS-XXL \$119

c. gondola teapot Vintage style.

9485 \$29
gondola cup & saucer 9486 \$12.95
shown with **conservatory tea cozy** TCCONC one size \$14



h
i
l

d. ornamental avians, pale blues, warm neutrals, and antiqued rhinestones will have your outfit soaring. 13" with 3" extender by Jill Swartz **birds on blue necklace** PLN3 \$98

e. conservatory cotton velvet throw THVCON5X6C 50x60" \$179 shown with **conservatory velvet cushion** CPVCON18C 14x18" \$54

f. emerald brocade tablecloth TPEMEC 54x54" Rayon \$109 shown with **emerald brocade cushion** CPEME16C 16x16" \$39

g. harvest kantha tablecloth TPHARV 54x54" Vintage Silk. \$109

h. printed wine velvet is the perfect match for this sublimely sophisticated floral pattern. Seriously—you will be noticed and I dare say—admired... Enjoy! Cotton Velvet. **sonata vest** VTA5265C XS-XXL \$89

i. that 'just right' garment no wardrobe can do without! Crafted with semi sheer rayon and a detachable cami, this design features twelve tiny tuxedo pleats framing a mother of pearl button front. Rayon Georgette. **georgina blouse** BLA5071C XS-XXL \$98

to live every day luxuriously

j. somewhere, there is a precious little munchkin who will soon be melting hearts and spreading smiles at your most important events for the season. The Sonata is a real treasure trove of darling design; dusty gold and ivory floral on deep wine velvet with a delicate organdy ruffled hem, all brought to life in our classic pin-afore style. Cotton Velvet. **sonata girls dress** DR5391C B \$79 K \$89

k. eager for the spotlight—A blend of rich plum and burnt amethyst with the dark rose velvet on this remarkably elegant garment. Designed in our timeless tunic shape and embellished with antiqued sea beads along the neckline. Rayon Velvet. **renaissance tunic** TNAA5259C XS-XXL \$119 W1-W2 \$129

l. are you ready to shine this holiday season? Here's your ticket—pair with the Sonata vest and one of our vintage inspired blouses for an unforgettable gorgeous outfit. Rayon velvet. **merlot pant** PTA5192C XS-XXL \$98

a **w**
b

k **w**
l



a



b



c



d



e



h

cozy flannels & old fashioned florals

a. bequeathed with an unmistakably magical quality—as though drawn directly from the pages of a time honored fairy tale. Embellished with exquisite embroidery of rare beauty and styled with handcrafted accents like an inset satin ribbon and twenty tiny pleats on the bodice. Cotton.

florentine nighty
NTA5270C XS-XXL \$89

b. smiling all the way to Spring—Fabulous flannel with embroidered appliqué braid on the lapel for an extra dollop of sweetness, and manifested in a remarkably soft cotton yarn.

allistair dressing gown
DGA5269C XS-XXL \$119

c. an old fashioned, priceless gem—From the softness and sturdiness of the curated Indian cotton to the signature April Cornell floral print, the Reverie is an item specially designed for peaceful (and pretty!) slumber. Brushed cotton.

reverie nighty
NTA5325C XS-XXL \$98

d. everytime I look at this garment I am transported to a peaceful little cabin in the big woods- crochet lace trim and a seasonal plaid combine to create a timeless style I'm happy to present!

Cotton plaid.
scottie nighty
NTA5285C XS-XXL \$89

e. my daughter in law and my granddaughter wore matching nighties like this on Christmas morning a couple years back, quite possibly the sweetest thing I have ever seen. The Allistair is made in the kind of flannel you want to live in this winter- soft, cozy, timeless. Delicately styled with a rounded Peter Pan collar, Celtic knot appliqué design on the yoke and light gathers for the perfectly flowing silhouette. Cotton flannel.

allistair nighty
NTA5268C XS-XXL \$89

f. doesn't this just make you want to snuggle your little munchkin while cozying up for a night of hot chocolate (with marshmallows!) and whatever Disney princess just landed on the big screen? A delectable cotton flannel blend adorably styled with tiny gathers, cute patch pockets and attached ruffle accents trimming the collar.

allistair girls dress
DR5406C B \$39 K \$49 G \$59
shown with penny petticoat
DR5354C B \$29 K \$39 G \$49

g. who wouldn't want a pair of super comfortable, delightfully cozy, harem style 'bloomette's'? So wonderful- made in skin nourishing cotton and adorned with a signature print. Cotton.
brenda bloomette
PTA5273C XS-XXL \$64
ivy bloomette
PTA5277C XS-XXL \$64
shown with poet camisole
CMA5279B XS-XXL \$69
available in antique red and navy

h. the Parlor is just so feminine it takes me to another time—and the details! The renaissance neckline and gorgeously embroidered panel on the bodice got me a bit carried away. Crochet trim with square cut neckline is something you just don't see... Anon! Silky rayon.

parlor nighty
NTA5282C XS-XXL \$109



g



g

new- bloomettes!



online: www.aprilcornell.com
 by phone (toll free): 888-332-7745 M—F, 8:30am — 9pm (EDT)
 We can help you! Call for assistance.
 by mail: Send this form with credit card information, check or money order
 to April Cornell, 131 Battery Street, Burlington, VT 05401

Standard shipping & handling rates: Contiguous United States

Name
Street
City
State
Zip
Email
Phone (required)

Merchandise Total	Lowest cost via SurePost	Standard Cost via UPS	Two-Day Air	Next Day Air
Delivery In	4-9 Business Days	2-6 Business Days	2 Business Days	1 Business Day
0-25.00	\$6.70	\$9.70	\$21.70	\$26.70
25.01-50.00	\$8.70	\$11.70	\$23.70	\$28.70
50.01-100.00	\$12.45	\$15.45	\$27.45	\$32.45
100.01-150.00	\$16.45	\$19.45	\$31.45	\$36.45
150.01-200.00	\$19.45	\$22.45	\$34.45	\$39.45
200.01-300.00	\$22.45	\$25.45	\$37.35	\$42.35
300.01-400.00	\$26.35	\$29.35	\$41.35	\$46.35
400.01 or more	FREE	\$32.35	\$44.35	\$49.35

For standard shipping and handling rates to Alaska, Hawaii and Puerto Rico, please visit our website.

ITEM #	SIZE	COLOR	ITEM NAME	QTY	PRICE EACH ITEM	TOTAL

Payment Method American Express MasterCard VISA DISCOVER CHECK/MONEY ORDER (see below)

Account Number	Security #	Exp. Date (mm/yy)
----------------	------------	-------------------

Add Shipping Cost (see chart)
 Free shipping for orders over \$150

** Add 7% Sales Tax on Linens in VT, NC & NJ
 ** Add 7% Sales Tax on Apparel in NC

ORDER TOTAL

I've enclosed a check or money order for...
 \$

* The 3-digit number is located on the back of the card at the end of the signature line.
 AMEX 4-digit number is located on the front of the card above the card number.
 ** Add in local taxes if applicable.

Signature for all charges

Ladies Collection in inches, US sizing.
 Actual garments measure slightly larger.

Size	6-8/XS	8-10/S	10-12/M	12-14/L	14-16/XL
Chest	34-36	36-38	38-40	40-42	42-44
Waist	27-28	29-30	31-32	33-34	35-36
Hip	36-37	38-39	40-41	42-43	44-45

Women's Collection, in inches, US sizing.
 Actual garments measure slightly larger.

Size	16-18/XXL	18-20/W1	20-22/W2
Chest	44-46	48-50	52-54
Waist	37-38	41-42	45-46
Hip	46-47	50-51	54-55

Girls Collection, in inches, US sizing.
 Actual garments measure slightly larger.

Size	2	3/4	5/6	7/8	9/10	11/12
Age	2-3 years	4-5 years	6-7 years	8-9 years	10-11 years	12-13 years
Chest	22-24	24-26	26-28	28-30	30-32	32-34
Dress Length*	21.5 or 22.5	24.5 or 27	28 or 30.5	32 or 34.5	33 or 35.5	34 or 36.5
Petticoats	23	27.5	31	35	36	37



A



B

One World Brothers is an expression of positive energy through unique style and global respect—designed by my son Lee Cornell—so proud!



C



D



E

- A. desert sunrise hoodie SH-09AA S-XL \$79
- B. rockets in flight shirt SH-16CC S-XL \$69
- C. woodsman long sleeve flannel SH-03BB S-XL \$79
- D. santa fe jacquard jacket JK-11AA S-XL \$149
- E. winter stripe hoodie jacket SH-09BB S-XL \$89

weekend style!



a

b

c



e

d

f

g

travel in style with the fabulous Flea Market Patchwork Duffle Bag! Perfect for weekend trips, this item is beautifully quilted and embellished with our trademark embroidery. Brought to life in a cheerful blend of our finest cotton prints. flea market patchwork bags
d. BGDFFLEC.Multi Duffle Bag 20" w x 9" w x 11" h \$79
e. BGLCFLEC.Multi Large Cosmetic Bag 10" w x 6" h x 5" d \$25
f. BGSCFLEC.Multi Small Cosmetic Bag 9" w x 6.5" h x 2" d \$19
g. BGRFCFLEC.Multi Round Cosmetic Bag 9" w x 9" h x 2" d \$19



a. a delightfully soft cotton denim dress is a different and refreshing choice for fall. Wear the Paula with tights or leggings for a pretty yet fun look whether for daytime work or nighttime play. Designed with a deep V-neck and princess seams that lead to generous scoop pockets.

Paula dress
DRA5241C XS-XXL \$79
 shown with **tapestry leggings** on page 24

b. distinctive design augmented by super saturated autumnal hues—wear the Camille to work with our Tapestry Leggings or to an engagement with a little heel—this versatile piece looks great either way!

Camille dress
DRA5224C XS-XXL \$84

c. i knew the moment I saw the first sample that we had hit a home run with the Meadow. Nature's goodness is extended in an authentic fashion with this design— it's like that first blast of cool air on a September morning— refreshing to the spirit, reminding you to love the journey Cotton/spandex. 94/6.

Meadow t-shirt
TSA5280C XS-XXL \$59

d. drawn from my very own Vermont garden, nothing is more quintessential to autumn décor than these magnificent mums trumpeting the rich colors of the season.

Mums tablecloth
TPMUM* 54x54" \$84

Mums placemat
MPMUM* 14x20" set of four \$48



e. beets embroidered tea towel
TTEBEETC Beet 19x27" \$19

f. fill our giving plate with yummy cookies for an original gift this season. The Giving Plate carries a wonderful sentiment in a poem, asking you to enjoy the gift and pass along the kindness. .
giving plate scallop
MPTLo10 10.5x10.5" \$14

g. crema & pink flowers giving plate
MPLTo36 10.5x11.5" \$16

h. artisan giving plate
MPLTL011 9.25 x 12" \$34

i. polka dot measuring cups
DA0095 \$14

j. tea rose oven mitt
OVTEAC one size \$18

k. tea rose little dish
TD2TEAC 12x12" set of two \$11

l. tea rose potholders
PHTEAC set of 2 \$14

m. harvest riches patchwork coasters
COHAR4C set of 4 \$16

n. flea market patchwork coasters
COFLE4C set of 4 \$16

o. pewter roman measuring cups
MC17 set of 4 \$89

p. pewter roman measuring spoons
MS17 set of 4 \$36

q. french lotus napkin
NPFRE20C 20x20" \$29





a

a. it's almost like this eclectic mixture of prints, plaids and chambray weaves were meant to be together—the synergy of color and design is simply undeniable. Cotton/rayon.

stevie dress
DRA5169C XS-XXL \$119
shown with dancing t-shirt on page 24

b. the cutest combination of our most precious prints!

stevie girls dress
DR5397C B \$59 K \$69 G \$79
shown with cloud petticoat in white
DR5385* B \$29 K \$39 G \$49

c. so cute! I can't wait to see some precious little one rambling about in this kid friendly frock. Soft cotton check is free and easy, just the way girls love to be!

madeline girls dress
DR5364C B \$44 K \$54
shown with cloud petticoat in white

d. steeped in the romantic details we love—from the heirloom lace collar to a delicately inset bodice, this inspired garment is already tomorrow's cherished collectible. Old-fashioned polka dots! Rayon. Distressed wash.

christina dress
DRAA5164C XS-XXL \$129 W1-W2 \$139

e. as versatile as can be and comfy as all get out- the kind of innocent style moms and grandmas in the know always have on hand—I mean who wants to fight a battle over wardrobe!? Precious detailing delivered on a skin soft woven cotton is the answer to so many of life's most vexing moments. Enjoy!

lakeside girls t-shirt
TS5398C K \$34 G \$44

f. easy, peasy, lemon squeazy—and cute as a button to boot! The Scottie is just the ticket for keeping your little love muffin looking smart and feeling free- from the first day of school to the last day of winter. Crafted in an old fashioned country check and made unforgettable by the sweet simplicity of its design, the Scottie will inhabit a special place in your heart for years to come.

scottie girls dress
DR5358C B \$44 K \$54 G \$64

shown with noella crown
ACK5425C one size \$12
and noella doll
DOLLNOE* \$39

g. here kitty kitty! These old fashioned creations are perfect for celebrating the sweet innocence and joy of girlhood. Miaowww! *Amethyst, Mixmatch, or RedEcru* **kitty doll**
DOLLKIT* \$29

h. not to stereotype here—but really, don't most girls love playing dress up while inhabiting magical realms that could only be drawn from their unlimited imagination? April's crowns go that extra step to foster a love for creativity with an old fashioned style that's as fun today as it was in generations past.

memories crown
ACK5424C one size \$12
noella crown
ACK5425C one size \$12
sonata crown
ACK5426C one size \$12



b



c

d

w

i. the perfect little embellished lace skirt to take the cake at parties, weddings, or any and all of life's most memorable moments. The Festive design is just that- FESTIVE, with its triple rows of ruffled lace repeated liberally throughout, in a darling design that will not soon be forgotten. Nylon tulle net.

festive girls skirt
SK5386C K \$44 G \$54

j. i just want to eat up the darling little legs that are going to look so precious in these! Nylon tulle net.

sorbet girls legging
PT5404C K \$29 G \$39
available in antique ecru and antique red

k. your precious little munchkin will be spreading smiles! A treasure of saturated autumn flowers on antiqued amethyst velvet adorned with patch pockets and an adorable shawl collar. Rayon velvet.

soirée girls dress
DR5407C B \$79 K \$89 G \$99
shown with memories crown
ACK5424C one size \$12



c

e



f



f



k



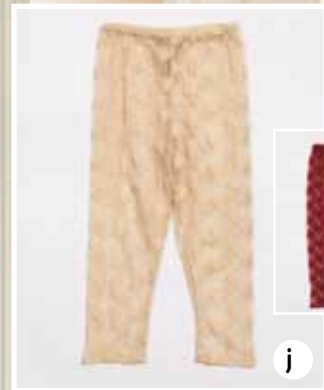
g



h



i



j



l. memories dress
DRAA5268C XS-XXL \$139
W1-W2 \$149

l

w



a w



b w



d



c

a. a gorgeous garment that is also versatile enough to fill all my needs for the season—from Monday morning to Saturday night. Embroidered lace diamond insets on the bodice are mirrored by the geometry of the black gussets on the skirt in stunning fashion. Rayon.

agatha dress
DRAA5261C XS-XXL \$139
W1-W2 \$149

b. moss soft cotton velvet, a faux double-breast opening, and a quilted puff collar—all are time honored details that bring this special garment to life—utterly gorgeous! Cotton velvet.

kitt jacket
JKAA5248C XS-XXL \$209
W1-W2 \$219
available in charcoal and olive

c. a tantalizing touch of Edwardian elegance! Delicious herringbone weave highlighted by a stunning crochet collar and lattice lace decoration on the bust. Peerless craftsmanship. Cotton.

eloise blouse
BLA5113C XS-XXL \$79

d. chic meets sweet with the London dress. The delicate print on the skirt is picked up again in darling fashion by the ruffled insets on the sleeve and the bodice features gathers below the yoke for a timeless effect. Rayon. Distressed wash.

london dress
DRA5050C XS-XXL \$98



e

f

e. steeped in the romantic details we love- from the heirloom lace collar to a delicately inset bodice, this inspired garment is already tomorrow's cherished collectible. Old-fashioned polka dots! Rayon. Distressed wash.

christina dress
DRAA5164C XS-XXL \$129
W1-W2 \$139

f. you will be noticed—and people will drool! Simple yet gorgeous, with pearlized buttons and the embroidered oversized collar—sophisticated, stunning style. Cotton.

jane dress
DRA5007C XS-XXL \$114
also available in mocha

e w



a. charming red, beautifully detailed—Named in honor of my little sister whom I love dearly, the Brenda captures the joy she exudes every single day. The tiny floral print reminds me of the Alberta wildflowers found near her home and the baked red ground color of her fiery nature when things go awry. Love you sis, this ones for you :) Crinkle cotton.

brenda dress
DRAA5122C XS-XXL \$119 W1-W2 \$129

b. quilted cotton goodness with a smile inducing floral for the unforgettable Brenda girls dress. Quilted cotton.

brenda girls dress
DR5359C B \$69 K \$79 G \$89
shown with cloud petticoat see online

c. holly quilted apron in red
Reverses to a soft green and ecru plaid. Reversible quilted. Diamond stitch. Cotton.

86096-2123R \$39
available in red, black and cream

d. holly runner in cream
Reverses to a soft green and ecru plaid. Reversible quilted. Diamond stitch. Cotton.

84267-2123C 14x51" \$39
available in black and cream

e. chickadee runner in white
Reverses to red and green stamped snowflakes. Reversible quilted. Diamond stitch. Cotton.

86267-2269 14x51" \$39

f. holly round placemat in cream
Sold individually. Reverses to soft green, red and ecru plaid. Reversible quilted. Diamond stitch. Cotton.

86260-2123C 17" round \$14
available in black and cream

g. holly rectangle placemat in black
Sold individually. Reverses to soft green, red and ecru plaid. Reversible quilted. Diamond stitch. Cotton.

86262-2123B 13x19" \$12
available in red, black and cream

h. chickadee placemat in white
Sold individually. Reverses to red and green stamped snowflakes. Reversible quilted. Diamond stitch. Cotton.

86260-2269 17" round \$14

i. holly quilted tablecloth
Reverses to soft green and ecru plaid. Reversible quilted. Diamond stitch. Cotton.

84291-2123R 54x54" \$89



a w

b

c

f

d

g

e

h

i



a. cotton velvet tam with falling leaves embroidery a little bit of "je ne sais quoi!" french beret
ACA5318C one size \$39
available in olive and black

b. sassy style, gorgeous lace, fun embroidery and a super cute shape. Cotton flannel and lace.
cheri dress
DRA6561C XS-XXL \$129
shown with tapestry leggings on page 24
shown with aprils legwarmers in brown

c. keep the cold at bay! Made in a chunky cable knit, these fun leg warmers are a timeless design for a life filled with heartwarming beauty and feminine style. Acrylic/Nylon/Spandex 80/17/3
april's leg warmers
ACA6013C one size \$29
available in black, brown, wine and charcoal

d. a kitchen, it seems to me, is only made truly whole by the shared laughter (and sometimes tears) of family and the celebrations we hold dear. A Christmas collection specially created to cheer your heart, featuring my Grammys magical shortbread recipe, a winter scene decked in Poinsettias, elves making merry beneath kind sentiments and finally, a sincere hope for the season- Joy for all!
dear poinsettia placemat
MPDPO* 14x20" set of four \$48

e. whether you're creating new memories or reminiscing over cupcakes, our old-fashioned aprons are the perfect complement to a joy-filled kitchen. Made in durable cotton canvas and adorned with several of our original prints, they make a lovely gift for the aspiring and accomplished homemaker alike.
christmas patchwork craft apron
APCHRC one size \$39
christmas patchwork kids apron
APKCHRC one size \$26

f. christmas botanical tablecloth
TPCBTC 36x36" \$26
 54x54" \$49 60x90" \$69
shown with cinnamon plaid tablecloth
TPWCINC 54x54" \$38
 60x90" \$64

g. lush and ready to pick, the Berry Bliss Earrings celebrate the berry jewel tones of summer. Coral stone, lucite two tone beads and rhinestones with antique gold tone castings. Gold-filled ear wires. 1 1/2"x1".
ELEMENTS/Jill Schwartz
berry bliss earrings
GogE \$89

h. peace, love and joy embroidered tea towels
TTELOV1 love, sold individually, approx. 28x19" \$15
TTEJOY1 joy, sold individually, approx. 28x19" \$15
TTEPEA1 peace, sold individually, approx. 28x19" \$15
also available in white with red embroidery *shown online*

i. wistfully mirroring the season, the sweet Promise Dress with 3/4 sleeves and yoke in the front is a must for every wardrobe. The full button front makes it easy to wear. Rayon.
promise dress
DRA5282C XS-XXL \$98

j. christmas botanical placemats a botanical study rendered in lively holiday motifs for your table
MPQCBTC 14x20" set of four \$48
christmas botanical napkins
NPCBT20C 20x20" set of four \$29
shown with essential napkins in red
NWESS18* 18x18" set of four \$24



a
b
c

b

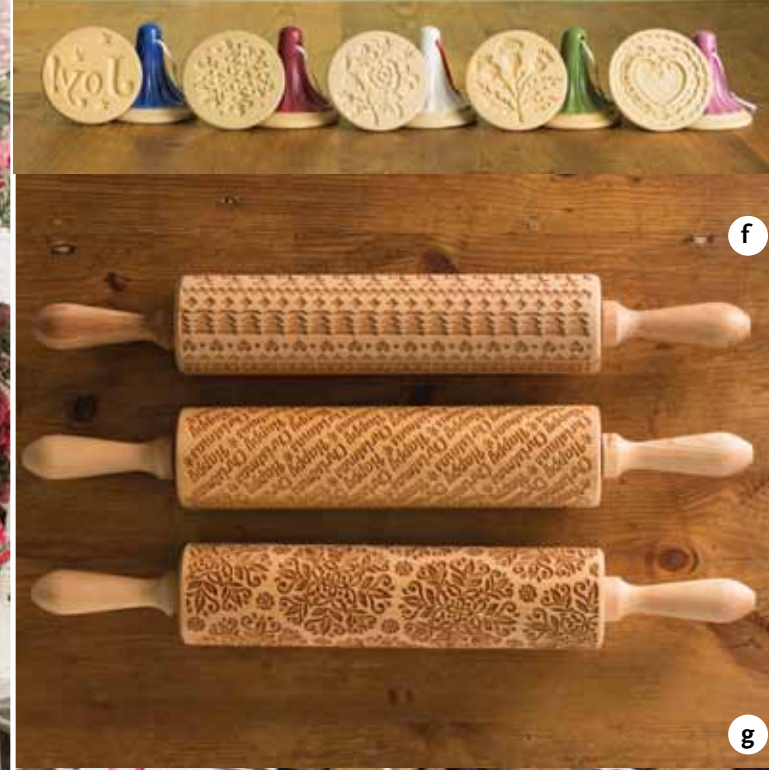
e

f

h

i

j



a

b

c

d

e

f

g

f

g

h

i

a. holly tablecloth classic christmas!
TPHOL* 36x36" \$26 54x54" \$49 60x90" \$69
60x108" \$89 88" round \$89

b. holly placemat and napkin
MPHOL* 14x20" set of four \$38
NPHOL2o* 20x20" set of four \$29
shown with essential napkin in olive

c. elves placemat
MPELV* 14x20" set of four \$48

d. christmas patchwork tablecloth
TPCHRC 54x54" \$109

e. whether you're creating new memories or reminiscing over cherished ones, our old fashioned aprons are the perfect complement to a joy filled kitchen. Specially delivered on supple yet resilient cotton duck with a great hand feel, this joyful print will inspire happy moments for years to come.
elves adult apron
APELV* one size \$39

elves kid's apron
APKELV* one size \$26

f. cookie stamps
BBSTXo2 Joy \$16
BBSTXo3 Snowflake \$16
BBSTCo9 Moss Rose \$16
BBSTCo1 Thistle \$16
BBSTCo8 Heart \$16

g. rolling pins
SQ3385402 Kaleidoscope \$52
SQ3385403 Happy Christmas \$52
SQ3385404 Winter Embossed \$52

h. holiday watercolor tea towels
TTSBC1* Shortbread Cookie Tea Towel 19x27" \$18
TTDPO1* Dear Poinsetta Tea Towel 19x27" \$18
TTELV1* Elves Tea Towel 19x27" \$18
TTJOY* Joy Joy Tea Towel 19x27" \$18

i. shortbread pans
BBo2214 Celtic Spring \$34
BBo2215 Norwegian Woods \$34



a



b

*your red blouse, your plaid cloth,
fresh new cushions,
chickadees on the table—*



3

4

6

5

2

1

c

d



a. a little slice of heaven! Whimsical piecing of lace and rayon brocade blend in utterly gorgeous fashion. Embellished by a lace collar and double-ruffle georgette hem. Cotton and georgette ruffle.
nostalgia blouse
BLA5243C XS-XXL \$89

b. christmas plaid tablecloth
TPWCHRC 54x54" \$38 60x90" \$64 60x108" \$79

c. holiday cushions
1. CPHOL2o* Holly Cushion Cover 20x20" \$24
2. CPEPIN12C Pinecone Embroidered Cushion 12x12" \$39
3. CPQUE2oC Queen's Court Cushion Cover 20x20" \$24
4. CPEBUT12C Button Tree Cushion 12x12" \$39
5. CPCCHK16* Chickadee Crewel Cushion 16x16" \$54
6. CPAVA2oC Ava Cushion Cover 20x20" \$24

d. crossover cotton front combined with classic Cornell smocking creates the unmistakable romance we just do not want to live without. The finely embroidered neckline of the Brenda Blouse is the indispensable touch for complementing this intentionally simple, yet beautiful style. Cotton.
brenda blouse
BLA523oC XS-XXL \$84

e. christmas plaid apron
APWCHRC one size \$24

f. chickadee placemats and napkins
MPCHK* 14x20" set of four \$38
NPCHK2o* 20x20" set of four \$29

g. chickadee tablecloth
TPCHK* 36x36" \$26 54x54" \$49 60x90" \$69 60x108" \$89 72x120" \$109 88" round \$89



e



f



*make your holidays
richly beautiful!*

g



feel beautiful, live beautiful, be beautiful

131 Battery Street
Burlington, VT 05401
888-332-7745

Experience April's World

NEW STORE! Asheville, NC

In US: North Conway, NH •
Burlington VT • Ocean Grove NJ

In CA: Hudson & Montreal QC
Courtenay BC

Falling in love with what you see?

There's so much more online!
www.aprilcornell.com

PRSR STD
U.S. Postage
PAID
April Cornell

Free shipping on orders over \$150* Use Code: HARVEST16 Offer expires 11/30/2016* 888-332-7745



a. i'm so glad you love this style!
A quirky cross between a camisole and a pantaloon, April's camaloon are everything you wished underpinnings could be and more! Fabulous under one of our back porch dresses and an absolute treat for sleeping. Made in 100% breathable cotton.

ivy camaloon

JSA5274C XS-XXL \$89

plum camaloon

JSA5330C XS-XXL \$79

scottie camaloon

JSA5278C XS-XXL \$89



a

*shipping applies to lowest cost via surepost only, offer excludes AK and HI