

summer 2015
 **April Cornell**

victorian patchwork:
limited edition linens
in gorgeous pastels
pages 30-33

fun, colorful cotton
**dresses for
summer**
pages 4-9

over 150 items
on SALE
20-30% OFF
pages 12-27

rosehip tablecloths
20% off page 14



flutter blouse
30% off page 25





Embracing summer

Dear, dear—you!

It is time for cotton dresses, pleated camisoles, wide legged pants, evenings that go on forever. It's time for living outdoors. . . time to put away worries and embrace our world in its flagrantly beauteous summer dress.

It's time to entertain friends outside, lay a cloth on the ground, share food and watch children form memories for a lifetime.

It is summer—nature's feast. Beauty is now commonplace.

Enjoy,

April Cornell

Feel Beautiful, Live Beautiful, Be Beautiful



April Cornell

summer 2015



victorian patchwork cushion 31



grannie's bloomers 8



festival patchwork kids apron 11



montana dress 5



“girls mean business”

We have been manufacturing in India for almost 40 years. In fact, we so fell in love with the place—the craft, the textiles, the expertise, and the people of India—that 24 years ago, we opened an office in New Delhi. Then, in 1992, we started our own factory.

Just three years ago, we moved to a new space, painted it magenta, planted bougainvillea and flowering tress, and made our “girls mean business” statement in the heart of industrial India.

Owned by a woman and run by a woman, we feel unique in the world of global manufacturing. Here we proudly employ more than 350 skilled tailors, pattern makers, cutting masters,

embroidery designers, production experts, and fabric experts in a factory that matches the standards and the style of our Vermont-based headquarters.

All our fabrics are designed by us. The prints, the patterns, and even the weaves are sourced in India, truly the wealthiest nation of textiles. Here the respect for art, design and craft, apprenticeship and skill still exists.

We strive to include these wonderful skills in our clothes and in our linens, to keep alive these arts that, once common, are now quickly disappearing.

Member, Business Social Compliance Initiative
www.bsci-intl.org



cover—montana dress shown on page 5
© 2015 April Cornell Online LLC



corporate responsibility

We believe in making a difference in the world, where we live, and where we work. As a company with deep roots in Canada, USA, and India, we are truly global and believe that giving back is part of our corporate responsibility.

For years, the April Cornell Company has supported projects for mothers and children, for first generation learners, for the blind and the handicapped, for the imprisoned and the homeless. It has been our blessing and our privilege to give a hand up, not a hand out to others in need.

In India, where our factory gives us so much beautiful product, so much craft and skill, we give back with every item we make to those in need. We also support a variety of fund-raising events and such charitable organizations as Concern India. For more about our giving back, visit us at www.givingworldfoundation.org

w indicates women's plus sizes, including XXL

m indicates mommy & me collection

ladies apparel, with the exception of accessories, comes in XS, S, M, L and XL

see page 24 for size chart and order form

all fabrics are 100% cotton unless otherwise noted.

April Cornell exclusive designs. Limited quantities, always.



fleur bird dress
DRA5129Y XS-XL \$98 \$78.40

Our special summer sale!

Limited quantities and sizes!

Check online to see if your size is still available! And don't forget April's Attic, where you'll find unexpected bargains all year long.

selected apparel & linens

20% off

See pages 12-21

30% off

See pages 22-27



victorian rose tablecloth in lavender
TPVICY \$24-89 \$19.20-71.20



time to kick back & enjoy. . .

summer holidays, times spent with friends and family, vacations and long weekends—relax and revive



indigo dress From the moment I first started traveling to India forty years ago, I fell in love with the rich colors of the natural dyes and the hand block printing techniques that had been mastered over centuries. This hand block inspired dress falls just above the knee and has a great stripe border on the hem, on the back yoke and armhole. Imported cotton. **DRA5015Y XS-XL \$98**



indigo turban Stunning and fabulously vintage, our 1940's and 50's inspired headscarves channel the glamorous style of stars like Sophia Loren that embody a sophisticated, timeless trend. Made in our original prints on cotton, they are one size fits all with an enclosed elastic at the back for the perfect fit. Imported cotton. **ACA5302Y \$29**



haley blouse Styled with our timeless, feminine details, the Haley Blouse is a breath of fresh air for the romantic at heart. One of our skin soft, self-stripe imported cottons, this piece has four rows of tonal embroideries on the front and a modified ruffle around the neck. Easy button front opening. White. **BLA5177Y XS-XL \$79**



tapestry leggings **PTAA5209Y XS-XXL \$59 W1-W2 \$69**

I have been in love with April Cornell for years. The dresses are so feminine, and you feel so beautiful wearing them. They are flowing, yet flattering. The fabric is so soft, the prints so unique. The details are a wonderful bonus.

— Leah E, Temple Hills, MD

maggie dress I love this fun mix of blues, yellows and sages bursting from the Indian-themed block prints and loosely drawn flowers. Because we design all our prints and fabrics by hand we are thrilled to create such unique, beautiful garments. The natural-waisted bodice also has eight inset rows of our heirloom quality crochet lace. Tieback. Imported cotton. **DRA5175Y XS-XL \$109**



indigo pant Varied indigo and white printed and solid stripes make these comfortable pants a standout. Wear with a white camisole or complete the look with the Indigo Camisole. Elastic drawstring waist. Imported cotton. **PTA5140Y XS-XL \$69**



◀ **elastic drawstring waist & patch pockets**



montana dress I can totally see this wonderful imported cotton dress at an amazing wedding on the beach or in a farm house surrounded by nature's beauty. Cutwork eyelet embroidery all over the bodice and mirrored on the hem is one of our signature details, and the neck is trimmed with a delicate ruffle. Floor length with a full skirt. Bodice inset. Gauze lined. Removable tieback. Imported cotton. White. **DRA5183Y XS-XL \$129**



▼ hidden pocket detail



leilani dress So romantic, so much Eastern influence, so April Cornell! This style harkens back to my younger years traveling around India and Afghanistan discovering the amazing textile traditions that resonated so deeply within me. This sumptuously soft dress hybrid is printed in the style of beautifully earth toned Indian block prints and is trimmed with a fabulous hand drawn terra cotta stripe. Small hidden pocket. Imported cotton. **DRA5157Y XS-XL \$209**



red dot & happy turbans Stunning and fabulously vintage, our 1940's and 50's inspired headscarves channel the glamorous style of stars like Sophia Loren that embody a sophisticated, timeless trend. Made in our original prints on imported cotton, they are one size fits all with an enclosed elastic at the back for the perfect fit.

ACA5304Y red dot \$29
ACA5301Y happy \$29



floribunda jumpsuit (above) The fabulous Floribunda print is a testament to the timeless creative vision of our talented artisans and designers. A densely packed floral design bursts with a rarely seen depth of color that springs to life in our popular throwback jumpsuit style that is so liberating and fun to wear. Relaxed fit. Gathered below the waist. Pockets. Exaggerated leg. Imported cotton. **JSA5076Y XS-XL \$109**

collette pant (left) Footloose and fancy free! The Collette Pant is one of those fabulously unique treasures that make us love what we do. Made in a lightweight cotton cambric featuring hand drawn, broken stripe print, the multiple tiers of gathered fabric serve to create a wildly exaggerated, playfully feminine, flounced hem. In black/white or red/ecru. Specify color. **PTA5105Y XS-XL \$89**



multiple tiers of gathered cotton fabric



mozart blouse Made in a 100% imported cotton, lightly embroidered fabric, this blouse features columns of masterful cutwork embroidery on the bodice and trimmed with a delicate cotton blend lace collar. White. **BLA5043Y XS-XL \$79**

rosie pant A gorgeous printed floral pant that is bursting at the seams with smile inducing color, the Rosie is a must have item for spring. Perfect for coordinating with our solid white cotton blouses like the Mozart or the Forever camisole, this item is styled with April's trademark easy going elegance. **PTA5225Y XS-XL \$84**

happy dress I wear this type of dress all the time, it's easy, sophisticated, cheerful, and bright.—characteristics I try to embody through my design and in my style. The pattern here has an oriental flavor and reminds me of a treasured antique vase. The front placket picks up on one of the colors in the print and is embroidered with a gorgeous scrolling floral vine. Falls below knee. Exaggerated skirt. Imported cotton.

DRA5193Y XS-XXL \$114
W1-W2 \$124



kalamkari tunic One of my favorite outfits consists of a great tunic, like the Kalamkari, paired with an easy pant or Tapestry Leggings. It's comfortable, elegant and flattering. This garment has lovely little seed beads around the neck. Side slits for ease. ¾ sleeve. Imported cotton. **TNA5213Y XS-XL \$79**

belle tunic in sorbet Our tunics, like the Belle, have become my "go-to" piece in the closet. I can throw it on with some leggings or blue jeans and know it is going to look good. Tailor made for elegance and comfort, this style has a gorgeous cut neckline with a mandarin collar and a plethora of tiny pleats on the bodice that open into an easy flowing drape. Imported cotton. **TNA5217Y XS-XXL \$74 W1-W2 \$84**





joni dress A carefree, joy filled style for a carefree, joy filled girl! Just right for a woman who still has a little “flower child” inside her and isn’t afraid to show it. The Joni Dress is a tour de force, boasting no less than six of April’s peerless, smile-inspiring floral prints for the season. Fabric tie. Imported cotton. **DRA5172Y XS-XL \$89**



primavera dress Our Primavera Dress in crinkled, imported cotton crepe channels the simple beauty of prairie aesthetics from days gone by. A one inch finished ruffle embellishment trimming the neckline and a slightly flounced shape to the cap sleeve are picked up in complementary fashion by a double ruffle detail on the hemline. Tieback. **DRA5022Y XS-XL \$129**



▲ double ruffle hemline



baby rose dress The Baby Rose is a timeless, romantic pinafore manifested in one of nature’s most treasured tones—soothing lavender. It features many of our signature details like soft crochet lace ringing the scoop neck, the armholes and inset in six vertical rows on the bodice. To top it off, a double pleat and deep hem create substance on the skirt. Fabric belt. Imported cotton. **DRA5236Y XS-XL \$89**

harriet dress (right) Brought to you in our signature color of periwinkle, the Harriet Dress is imbued with a playful polka dot print and an equally fun multi-colored button front. This style has a rounded collar and big patch pockets, gathers below the waist and has a fabric tie at the back for creating just the right shape. Imported cotton. **DRAA5018Y XS-XXL \$89 W1-W2 \$99**



pantaloons pants Crisp imported cotton pantaloons that are perfect for layering under our dresses for a classically romantic, Victorian feel. Made in a specially curated Indian cotton, these pants feature a deep, scalloped hem, made of beautifully finished crochet lace. Pair with cuffs and collars for the complete look! Ecrú. **PTA5233Y XS-XL \$59**



grannie’s bloomers I always seek out, and often find, the most unexpected inspiration from past times. This particular style is based on an old-fashioned “bloomer.” We just knew we had to bring them back to life in some of our best prints, and the result: Well, let’s just say they bring a smile to the face of everyone who’s seen them! Imported cotton. **BOA5294Y XS-XL \$39**
left to right: primavera, delft, victorian rose and dottie



essential ribbed placemats Add texture and contrast to your layered table with our reversible Essential Placemats in two solid tones. A hint of the second hue accents their ribbing. Sturdy but soft, they’re a beautiful foundation for all our signature prints. True to their woven nature, occasional slubs in the weave add to each placemat’s individual character. Hand-knotted fringe. Reversible. Set of four. 14x20" Specify color: Light Green/Yellow, Rose/Ecrú, or Light/Dark Periwinkle. **MPES518Y \$28**



festival patchwork tablecloth TPFESY 54x54" \$99



festival patchwork runner 13x72". RNFESY \$39



festival patchwork crossbody bag Tote in style! Quilted and embellished, the crossbody bag has a zipped closure and an adjustable strap. The small craft bag has matching, sewn on handles. Imported cotton. BGCBFESY \$74

a patchwork of floral brights

a combination of no less than five of our most colorful prints of the season make up our festival patchwork design



festival patchwork craft bag Magnetic closure.

BGCSFESY small craft bag \$49



festival patchwork small and large cosmetic bags Top zipper.

BGLCFESY large approx. 10w x 5.5h x 4.5d" \$25
BGCSFESY small approx. 9w x 7h x 2d" \$19



festival patchwork duffles Perfect for weekend trips, the small and large duffles are beautifully quilted and embellished with trademark floral applique. The small duffel has a rounded body; the larger duffel a square. Imported cotton.

BGSDFESY small 16w x 9h x 9d" \$64
BGDBFESY large 20w x 11h x 9d" \$79



festival patchwork mommy & me aprons Sold separately.

APFESY adult apron \$34
APKFESY kids apron \$24



festival patchwork & zinnia garden prints move into the laundry The colors found in our Festival Patchwork and Zinnia Garden prints announce Spring and Summer's arrival in bright lime greens, blazing yellows, brilliant reds and rose with hints of lush dark true green. Imported cotton.

festival patchwork laundry bags Drawstring closure.
LBFESSMY small 13.5w x 26h" \$24 LBFESLGY large 18.5w x 29.5h" \$39

festival patchwork laundry pennants 11 pennants
PENFESY 74" long, two 17" ties \$29

zinnia garden ironing board cover one size with elastic border fits most ironing boards. Handy side pocket. IBCZINY 20 x 57" \$49



festival patchwork placemat
Set/2 MPQFESY \$58



festival patchwork napkins
NPFES2oY \$29



festival patchwork ovenmitt Front & back shown.
OVFESY \$18



festival patchwork cushion Front & back shown. CPRFES18Y 18x14" \$39

20% off selected linens

LIMITED SIZES & QUANTITIES

To find out if the size, print, style & color you want are still available, please go to our website—www.aprilcornell.com—or call toll free—888-332-7745.

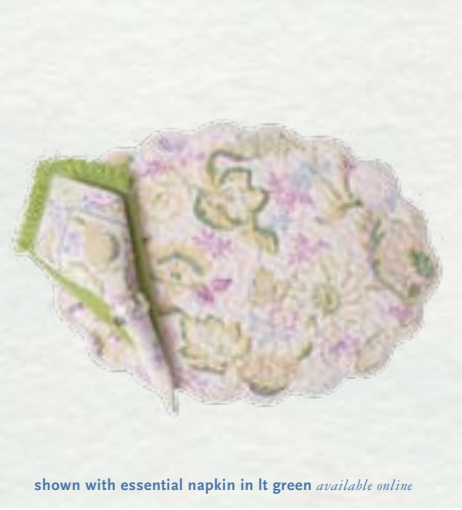
See what else might be on sale online. Not all sale items are shown in this catalog.



peaceful plaid tablecloth
TPWPEAY ~~\$36.64~~ \$28.80-51.20



evelyn skirt apron in soft rose
APSKEVEY *shown over victoria dress, page 35* ~~\$24~~ \$19.20



shown with essential napkin in lt green available online

evelyn quilted placemat & napkins in soft rose
MPQEVEY placemat set/4 ~~\$48~~ \$38.40
NPEVE2oY napkins set/4 ~~\$29~~ \$23.20



peaceful patchwork ovenmitt
OVPEACY front and back shown ~~\$18~~ \$14.40



peaceful patchwork quilt
QEACY queen quilt ~~\$289~~ \$231.20
king quilt ~~\$299~~ \$239.20



peaceful patchwork tablecloth
TPPEACY ~~\$99~~ \$79.20

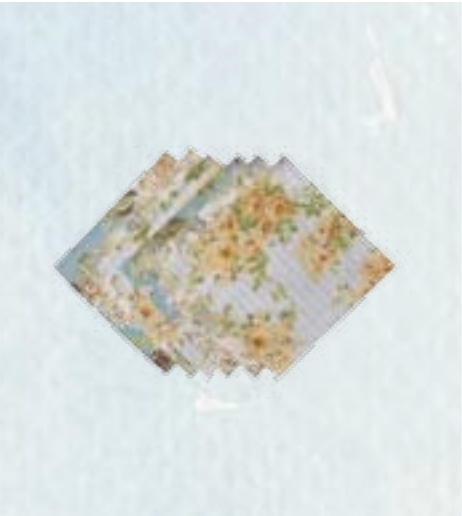


shown with essential napkin in green available online

peaceful plaid ribbed placemat & napkin
MPWPEAY placemat set/4 ~~\$32~~ \$25.60
NPWPEA18Y napkin set/4 ~~\$26~~ \$20.80



peaceful patchwork cushion
CPRPEAC18Y 14x18" ~~\$39~~ \$31.20



peaceful patchwork cocktail napkins
NP6PEAC1oY set/6 ~~\$16~~ \$12.80



peaceful patchwork pillowcase
PCPEACY ~~\$34~~ \$27.20



shown with essential napkin in yellow sold out

peaceful patchwork quilted placemat & napkins
MPQPEACY placemat set/4 ~~\$58~~ \$46.40
see below for napkin bundle information



evelyn tea towel & little dish in soft rose
TTEVEY tea towel set/2 ~~\$26~~ \$16
TD2EVEY little dish set/2 ~~\$16~~ \$8



peaceful patchwork apron
APPEACY *shown over primavera dress, page 8* ~~\$34~~ \$27.20



evelyn tablecloth in soft rose
TPEVEY ~~\$24.89~~ \$19.20-71.20



peaceful patchwork pennants
PENPEACY 11 pennants. Imported cotton. 72" long
~~\$29~~ \$23.20



evelyn runner in soft rose
RNEVEY 13x72" ~~\$34~~ \$27.20



peaceful patchwork napkin bundle
NPPEAC2oY set/4 ~~\$29~~ \$23.20

20% off selected linens

LIMITED SIZES & QUANTITIES

To find out if the size, print, style & color you want are still available, please go to our website—www.aprilcornell.com—or call toll free—888-332-7745.

See what else might be on sale online. Not all sale items are shown in this catalog.



shown with essential napkin in lt green available online

victorian rose placemat & napkin in lavender
 MPVICY placemat set/4 ~~\$38~~ **\$30.40**
 NPVIC2oY napkin set/4 ~~\$29~~ **\$23.20**



rosehip apron in ecru
 APRHPY regular ~~\$34~~ **\$27.20** chef ~~\$35~~ **\$28**



bouquet stripe tablecloth
 TPWBOUY ~~\$36-64~~ **\$28.80-51.20**



rosehip cushion cover
 CPRHP2oY 20x20" ~~\$24~~ **\$19.20**
 poly filler available online



veranda tablecloth
 TPVERY ~~\$24-89~~ **\$19.20-71.20**



shown with essential napkin in aqua available online

veranda quilted placemat & napkin in ecru
 MPQVERY placemat set/4 ~~\$48~~ **\$38.40**
 NPVER2oY napkin set/4 ~~\$29~~ **\$23.20**



bouquet stripe rug
 RGWBOUY 24x38" ~~\$24~~ **\$19.20**



victorian rose quilt in lavender
 QVICY queen quilt ~~\$279~~ **\$223.20**
 king quilt ~~\$299~~ **\$239.20**



shown with essential napkin in periwinkle available online

rosehip placemat & napkin in ecru
 MPRHPY placemat set/4 ~~\$38~~ **\$30.40**
 NPRHP2oY napkin set/4 ~~\$29~~ **\$23.20**



bouquet stripe throw blanket
 THWBOUY 48x72" ~~\$49~~ **\$39.20**



victorian rose tea towel & little dish in lavender
 TTVICY tea towel set/2 ~~\$26~~ **\$16**
 TD2VICY little dish set/2 ~~\$16~~ **\$8**



rosehip tablecloth in ecru
 TPRHPY ~~\$46-89~~ **\$19.20-71.20**



veranda tea towel & little dish in ecru
 TTVERY tea towel set/2 ~~\$26~~ **\$16**
 TD2VERY little dish set/2 ~~\$16~~ **\$8**



rosehip shower curtain in ecru
 SHRHP72Y 72x72" ~~\$69~~ **\$55.20**



veranda collar apron in ecru
 APCVERY ~~\$39~~ **\$31.20**



victorian rose market bag in lavender
 BGMVICY ~~\$27~~ **\$21.60**



rosehip runner in ecru
 RNRHPY 13x72" ~~\$34~~ **\$27.20**



a



b



c



j



d



e



f



k



g



h



i



l

**20% off
selected apparel**

LIMITED SIZES & QUANTITIES

To find out if the size, print, style & color you want are still available, please go to our website—www.aprilcornell.com—or call toll free—888-332-7745.

See what else might be on sale online. Not all sale items are shown in this catalog.



m



n



o

- a. amelie nighty**
Imported cotton. White.
NTA5264Y XS-XL ~~\$98~~ **\$78.40**
- b. imagine nighty**
Imported cotton. White.
NTA5276Y XS-XL ~~\$79~~ **\$63.20**
- c. bee shortie pajama**
Imported cotton.
PJA5257Y XS-XL ~~\$94~~ **\$75.20**
- d. bronte nighty**
Imported cotton. White.
NTAA5286Y XS-XXL ~~\$89~~ **\$71.20**
W1 & W2 ~~\$99~~ **\$79.20**
- e. pansy nighty**
Imported cotton. White.
NTA5270Y XS-XL ~~\$89~~ **\$71.20**
- f. morning pajama**
Imported cotton. White.
PJA5296Y XS-XL ~~\$114~~ **\$91.20**
- g. rapunzel nighty**
Imported cotton. White.
NTA5253Y XS-XL ~~\$94~~ **\$75.20**
- h. softness nighty**
Imported cotton. Ecrú.
NTA5268Y XS-XL ~~\$89~~ **\$71.20**
- i. flower cloud nighty**
Imported cotton. White.
NTA5290Y XS-XL ~~\$89~~ **\$71.20**
- j. lola tshirt**
Imported cotton.
TSA5186Y XS-XL ~~\$79~~ **\$63.20**
- k. meadow blouse**
Imported cotton.
BLA5007Y XS-XL ~~\$69~~ **\$55.20**
- l. emma blouse**
Rayon.
BLA5026Y XS-XL ~~\$89~~ **\$71.20**
- m. papillon blouse**
Rayon. Ecrú.
BLA5166Y XS-XL ~~\$104~~ **\$83.20**
- n. celadon tunic**
Imported cotton.
TNAA5069Y XS-XXL ~~\$89~~ **\$71.20**
W1 & W2 ~~\$99~~ **\$79.20**
- o. radiance tunic**
Imported cotton. White.
TNA5100Y XS-XL ~~\$104~~ **\$83.20**



a. boardwalk dress
 Imported cotton. White. DR5376Y
 B ~~\$84~~ \$67.20
 K ~~\$98~~ \$78.40
 G ~~\$109~~ \$87.20

b. camille dress
 Imported cotton. DR5362Y
 B ~~\$39~~ \$31.20
 K ~~\$49~~ \$39.20
 G ~~\$59~~ \$47.20

c. rosie dress
 Rayon. DR5369Y
 B ~~\$49~~ \$39.20
 K ~~\$64~~ \$51.20
 G ~~\$74~~ \$59.20

d. delft dress
 Imported cotton. DR5359Y
 B ~~\$39~~ \$31.20
 K ~~\$49~~ \$39.20
 G ~~\$59~~ \$47.20

e. nebraska dress
 Imported cotton. DR5358Y
 K ~~\$69~~ \$55.20
 G ~~\$79~~ \$63.20

f. minny dress
 Imported cotton. DR5377Y
 B ~~\$49~~ \$39.20
 K ~~\$64~~ \$51.20
 G ~~\$74~~ \$59.20

g. magnolia dress
 Imported cotton. DR5353Y
 B ~~\$39~~ \$31.20
 K ~~\$49~~ \$39.20
 G ~~\$59~~ \$47.20

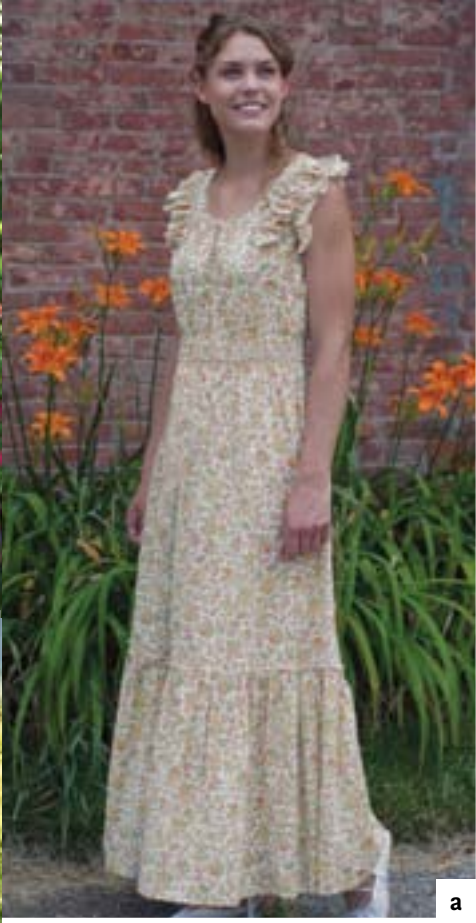
h. josephine dress
 Imported cotton blend. DR5379Y
 K ~~\$129~~ \$103.20
 G ~~\$139~~ \$111.20

i. frankie dress
 Imported cotton. DR5364Y
 B ~~\$39~~ \$31.20
 K ~~\$49~~ \$39.20
 G ~~\$59~~ \$47.20

girls pricing

Price	Age
B/Baby	0-18 mos.
K/Kids	2-6 years
G/Girls	8-12 years

girls sizing charts available online



20% off selected apparel

LIMITED SIZES & QUANTITIES

To find out if the size, print, style & color you want are still available, please go to our website—www.aprilcornell.com—or call toll free—888-332-7745.

See what else might be on sale online. Not all sale items are shown in this catalog.

a. bee dress
 Imported cotton.
 DRA5154Y XS-XL ~~\$119~~ \$95.20

b. nebraska dress
 Imported cotton.
 DRAA5138Y XS-XXL ~~\$129~~ \$103.20
 W1 & W2 ~~\$139~~ \$111.20

c. tapestry leggings in coral
 Imported cotton.
 PTA5209Y XS-XL ~~\$59~~ \$47.20

d. tapestry leggings in lt periwinkle
 Imported cotton.
 PTA5209Y XS-XL ~~\$59~~ \$47.20

e. tapestry leggings in jade
 Imported cotton.
 PTA5209Y XS-XXL ~~\$59~~ \$47.20
 W1 & W2 ~~\$69~~ \$55.20

f. cowgirl jacket
 Imported cotton blend.
 JKA5180Y XS-XL ~~\$109~~ \$87.20
 W1 & W2 ~~\$119~~ \$95.20

g. primavera tunic
 Imported cotton.
 TNA5146Y XS-XL ~~\$79~~ \$63.20
 W1 & W2 ~~\$89~~ \$71.20

I am in love with this dress. I wear it at least once a week if not more. It is super flattering and incredibly cool in summer.

— Madison, Apex, NC



20% off selected apparel

LIMITED SIZES & QUANTITIES

To find out if the size, print, style & color you want are still available, please go to our website—www.aprilcornell.com—or call toll free—888-332-7745.

See what else might be on sale online. Not all sale items are shown in this catalog.



a

a. rosie ruffles dress
Rayon.
DRA5025Y XS-XL ~~\$109~~ **\$87.20**

b. claudette dress
Imported cotton.
DRAA5190Y XS-XXL ~~\$89~~ **\$71.20**
W1 & W2 ~~\$99~~ **\$79.20**

c. sunrise caftan
Imported cotton.
CFAA5064Y XS-XXL ~~\$98~~ **\$78.40**
W1 & W2 ~~\$108~~ **\$86.40**

d. flynn dress
Imported cotton.
DRA5108Y XS-XL ~~\$189~~ **\$151.20**

e & f. frannie blouse
Imported cotton.
Please specify color: Apple Green or White
BLA5176 XS-XL ~~\$79~~ **\$63.20**

g. evelyn dressing gown
Rayon.
DGA5293 XS-XL ~~\$139~~ **\$111.20**

h. helen dress
Rayon.
DRA5223 XS-XL ~~\$149~~ **\$119.20**

i. ikat dress
Imported cotton.
DRA5204 XS-XL ~~\$104~~ **\$83.20**

j. hannah dress
Imported cotton.
DRAA5169Y XS-XL ~~\$114~~ **\$91.20**
W1 & W2 ~~\$124~~ **\$99.20**

k. annah dress
Imported cotton.
DRAA5235 XS-XXL ~~\$86~~ **\$71.20**
W1 & W2 ~~\$99~~ **\$79.20**

l. helena dress
Rayon.
DRA5139 XS-XL ~~\$159~~ **\$127.20**

m. ikat jacket
Imported cotton.
JKAA5103 XS-XXL ~~\$109~~ **\$87.20**
W1 & W2 ~~\$119~~ **\$95.20**



b



c



h



i



j



d



e



g



k



l



m



a



b



c



g



d



e



f



h

30% off selected items

LIMITED SIZES & QUANTITIES

To find out if the size, print, style & color you want are still available, please go to our website—www.aprilcornell.com—or call toll free—888-332-7745.

See what else might be on sale online. Not all sale items are shown in this catalog.

a. magnolia dress

Imported cotton.
DRAA5086 XS-XXL ~~\$89~~ **\$62.30**
W1 & W2 ~~\$99~~ **\$69.30**

b. frankie dress

Imported cotton.
DRA5220Y XS-XL ~~\$89~~ **\$62.30**

c. lucille dress

Imported cotton.
DRA5198Y XS-XL ~~\$89~~ **\$62.30**

d. elly dot dress

Imported cotton.
DRAA5240Y XS-XL ~~\$89~~ **\$62.30**
W1 & W2 ~~\$99~~ **\$69.30**

e. bouquet dress

Imported cotton.
DRA5082Y XS-XL ~~\$104~~ **\$72.80**

f. delft dress

Imported cotton.
DRAA5184 XS-XXL ~~\$89~~ **\$62.30**
W1 & W2 ~~\$99~~ **\$69.30**

g. odette dress

Imported cotton.
DRA5148Y XS-XL ~~\$98~~ **\$68.60**

h. lola dress

Imported cotton.
DRA5232Y XS-XL ~~\$98~~ **\$68.60**

i. roses on stripe tablecloth in aqua

TPROSY ~~\$24.69~~ **\$16.80-48.30**

j. roses on stripe quilted placemat & napkin in aqua

MPQROSY placemat set/4 ~~\$48~~ **\$33.60**
NPROS20Y napkin set/4 ~~\$29~~ **\$20.30**

k. tile tablecloth in ecru

TPTILEY ~~\$46.69~~ **\$32.20-48.30**

l. tile placemat & napkin in ecru

MPTILEY placemat set/4 ~~\$38~~ **\$26.60**
NPTILE20Y napkin set/4 ~~\$29~~ **\$20.30**



i



j

shown with essential napkin in pink available online



k



l

shown with essential napkin in yellow available online

Ordering is easy!

online: at www.aprilcornell.com
by phone (toll free): 888-332-7745 M—F, 8:30am — 6pm (EDT)
by mail: Send this form in a stamped envelope with credit card information, check or money order to April Cornell, 131 Battery Street, Burlington, VT 05401

Ordered by (Billing name & address)

Name		
Street		
City	State	Zip
Email		
Phone (required)		

Deliver to (for shipment to a different address)

Name		
Street		
City	State	Zip
Phone (required)		
Gift Message		

ITEM #	SIZE	COLOR	ITEM NAME	QTY	PRICE EACH ITEM	TOTAL

Payment Method	<input type="checkbox"/> American Express	<input type="checkbox"/> MasterCard	<input type="checkbox"/> VISA	<input type="checkbox"/> DISCOVER	<input type="checkbox"/> CHECK/MONEY ORDER (see below)	** Add 7% Sales Tax on Linens in VT & NJ
Account Number	Security #*		Exp. Date (mm/yy)		ORDER TOTAL	Add Shipping Cost (see chart)
I've enclosed a check or money order for... \$		* The 3-digit number is located on the back of the card at the end of the signature line. AMEX 4-digit number is located on the front of the card above the card number.		Signature for all charges		
No C.O.D. please.		** Add in local taxes if applicable.				

Looking for a quick gift?

Our Gift eCards are emailed to your recipient as soon as the order is placed. To order, please go to aprilcornell.com.

Questions? Email us at customerservice@aprilcornell.com or call Customer Service at 888-332-7745.

Returns & Exchanges

- Return Policy** Merchandise must be returned unused, unwashed, and in original condition with tags attached. Please include packing slip/receipt or order confirmation. If packing slip or order confirmation is not available, please provide your name and contact information on a piece of paper with your return. If merchandise is damaged or has a quality issue, please contact Customer Service at 888-332-7745 before returning. Please allow 2-3 weeks to process your return.
- Current Season Items** Current Season merchandise returned within 30 days of receipt qualify for a full refund of the purchase price, to the original form of payment used.
- Attic** Attic items receive online credit.

- Exchanges** Send item(s) within 30 days of receipt to **April Cornell Returns**, 131 Battery Street, Burlington, VT 05401. Please include the bottom portion of the packing slip with the item and indicate item number, description and size (if applicable) of item you would like in exchange.

Sizes

Ladies Collection in inches, US sizing. Actual garments measure slightly larger.

Size	6-8/XS	8-10/S	10-12/M	12-14/L	14-16/XL
Chest	34-36	36-38	38-40	40-42	42-44
Waist	27-28	29-30	31-32	33-34	35-36
Hip	36-37	38-39	40-41	42-43	44-45

Women's Collection, in inches, US sizing. Actual garments measure slightly larger.

Size	16-18/XXL	18-20/W1	20-22/W2	XXL sizes available only in April Woman Collection Styles. Look for the (W) on catalog photos to see if the item is available in Plus Sizes.
Chest	44-46	48-50	52-54	
Waist	37-38	41-42	45-46	
Hip	46-47	50-51	54-55	

We respect your privacy We aim to provide you with a safe and enjoyable shopping experience. To improve that experience and to ensure that you receive marketing messages relevant to you, we collect minimal transactional information and exchange some shopping data with reputable, like-minded marketing companies. We never sell your name. You have the choice to opt-out of newsletters and decline receiving catalogs. To unsubscribe from emails, simply select the "Unsubscribe" option at the bottom of every email. To stop receiving catalogs, please email customerservice@aprilcornell.com or call 1-888-332-7745 (Mon-Fri from 8:30am to 6pm EDT).

Delivery We ship your order from Vermont within 48 hours, excluding weekends and holidays. Most orders ship using the Lowest Cost method via SurePost®, an economy ground shipping service offered through UPS and the United States Postal Service. It combines the speed and reliability of UPS with convenient final delivery by the USPS. To receive your package via SurePost® you must provide your physical address, not just a PO Box.

We ship to all US addresses including Alaska, Hawaii and Puerto Rico. We also ship to Canada from our Canadian website—www.aprilcornell.ca. Please call Customer Service for a quote on shipping to international destinations. All U.S. and international shipments are from our Burlington, Vermont warehouse.

Standard shipping & handling rates: Contiguous United States

Merchandise Total	Lowest cost via SurePost	Standard Cost via UPS	Two-Day Air	Next Day Air
Delivery In	4-9 Business Days	2-6 Business Days	2 Business Days	1 Business Day
0-25.00	\$6.70	\$9.70	\$21.70	\$26.70
25.01-50.00	\$8.70	\$11.70	\$23.70	\$28.70
50.01-100.00	\$12.45	\$15.45	\$27.45	\$32.45
100.01-150.00	\$16.45	\$19.45	\$31.45	\$36.45
150.01-200.00	\$19.45	\$22.45	\$34.45	\$39.45
200.01-300.00	\$22.45	\$25.45	\$37.35	\$42.35
300.01-400.00	\$26.35	\$29.35	\$41.35	\$46.35
400.01 or more	FREE	\$32.35	\$44.35	\$49.35

For standard shipping and handling rates to Alaska, Hawaii and Puerto Rico, please visit our website.



fleur bird blouse Imported cotton.
BLA5238Y ~~\$64~~ \$44.80



pepper blouse Imported cotton.
BLA5178Y ~~\$79~~ \$55.30



georgie tunic Imported cotton.
TNA5002Y ~~\$94~~ \$65.80



helen blouse Rayon.
BLA5224Y ~~\$98~~ \$68.60



emerald tunic Imported cotton.
TNA5210Y ~~\$89~~ \$62.30



georgie tunic Imported cotton.
TNA5002Y ~~\$94~~ \$65.80



flower fiesta cover up Imported cotton blend.
CUA5047Y ~~\$104~~ \$72.80



flutter blouse Rayon.
BLA5039Y ~~\$89~~ \$62.30



belle tunic Imported cotton.
TNA5097Y ~~\$74~~ \$51.80

30% off selected apparel

30% off selected items

LIMITED SIZES & QUANTITIES

To find out if the size, print, style & color you want are still available, please go to our website—www.aprilcornell.com—or call toll free—888-332-7745.

See what else might be on sale online. Not all sale items are shown in this catalog.



a



b



c



d



e shown with essential napkin in green available online



f

a. anglaise net curtain in periwinkle
CURANG84Y Net curtain. 36x84" ~~\$89~~ **\$62.30**

b. anglaise net curtain in rose
CURANG84Y Net curtain. 36x84" ~~\$89~~ **\$62.30**

c. zinnia garden tablecloth in ecru
TPZINY ~~\$46-69~~ **\$32.20-48.30**

d. cottage embroidered tea towels in garden & romance sold separately, specify color
TTECOT1Y ~~\$39~~ **\$13.30**

e. zinnia garden quilted placemat & napkin in ecru
MPQZINY placemat set/4 ~~\$48~~ **\$33.60**
NPZIN20Y napkin set/4 ~~\$29~~ **\$20.30**

f. blossom stripe tablecloth
TPBLOY ~~\$46-69~~ **\$32.20-48.30**

g. josephine dress
Imported cotton blend.
DRA5072Y XS-XL ~~\$289~~ **\$202.30**

h. chanson dress
Rayon.
DRAA5073Y XS-XXL ~~\$129~~ **\$90.30**
W1-W2 ~~\$139~~ **\$97.30**

i. anglaise long dress
Rayon.
DRA5094Y XS-XL ~~\$198~~ **\$138.60**

j. luna dress
Nylon.
DRA5167Y XS-XL ~~\$169~~ **\$118.30**

k. anglaise short dress
Rayon.
DRA5065Y XS-XL ~~\$169~~ **\$118.30**

l. song dress
Rayon.
DRA5226Y XS-XL ~~\$159~~ **\$111.30**



g



h



i



j



k



l

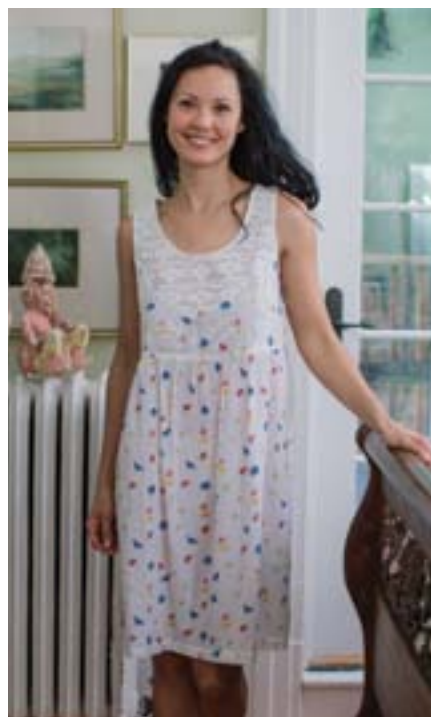


sweet dreams and restful sleep

the soft comfort of pure cotton nighties, so light and cool next to your skin on long summer nights



fleur nighty Just the kind of romantic, one of a kind, tastefully detailed sleepwear you can count on from April Cornell. The Fleur nighty is made in our 100% cotton voile that gets even softer with age. Feminine floral embroidery playfully scrolls along the square neckline while multiple rows of pleats give substance and texture to the body. **NTAA5269Y XS-XXXL \$89 W1-W2 \$99**



forget-me-not nighty (left) Another take on our new "nightshirt" inspired nighties, the Forget Me Not has embroidered floral buds blooming at the bodice that are layered atop a plethora of tiny textured pin tucks. Gathers below the embroidery. Slightly longer in the front and back. Below knee length. ½ sleeve. Cotton crepe. **NTA5292Y XS-XL \$89**



jardin nighty (above) From the hand stitched smocking detail to the delicate lace around the collar and puff sleeve, not to mention the gorgeous peasant shape of the empire waisted top the Jardin Nighty is signature April Cornell. Made in our 100% skin soft, patterned cotton, this piece is tea length and destined to be treasured. **NTAA5285Y XS-XXXL \$98 W1-W2 \$108**

fleur bird nighty (left) Our incomparably soft cotton voile fabric in the Fleur Bird Nighty features the playful Fleur print. Delicately embroidered on the front with artfully inset beautifully woven lace around the neckline and onto the bodice, this delightful garment falls just to above the knee. **NTA5271Y XS-XL \$94**



night time nighty (left) The Night Time Nighty is made in our incomparable, 100% skin soft cotton bamboo and is basically the most comfortable thing you could wear next to wearing nothing at all. Fabulously detailed with an intricately embroidered bib and gathered below for an easy flow, this piece falls to above ankle and showcases a timeless mandarin collar. ¾ sleeve. White. **NTA5291Y XS-XL \$94**



eye masks April's embroidered eye masks make a fun gift for someone who could use a little extra shut eye or, even better, a self gift for jet setters with a sense of whimsy. Available in three color pallets. Imported cotton voile, elastic band.

EM5308Y wink \$14
EM5309Y sleeping eye \$14
EM5307Y wide awake \$14



daffodil nighty (left) A delicately embroidered, princess seamed bodice blooms on front of the Daffodil Nighty. Made in our 100% skin-loving cotton voile with embellishments of scalloped crochet lace on the neckline button placket and sleeve. Gathers on the front create an easy, flowing April Cornell fit. **NTAA5251Y XS-XXXL \$74 W1-W2 \$84**



chantilly nighty The Chantilly Nighty showcases gorgeous, cutwork ephemeral lace on the sleeves and bodice and is finished at the cuffs and around the collar with a tiny crochet trim. Made in our fabulously soft 100% signature, imported cotton, this romantic nightgown has the power to provide restful nights and languorous mornings. White. **NTA5255Y XS-XL \$98**



devon nighty (left) The Devon Nighty is, of course, made in our peerlessly soft cotton we have spent a lifetime sourcing and refining. The bodice is tonally embroidered and inset with six rows of delicate crochet lace. The sleeves are manifested in an ephemeral translucent lace and the piece is lightly gathered below the waist for an easy, flowing fit. Ecrú. **NTA5277Y XS-XL \$89**

▼ **whisper-soft lace sleeve**



françoise nighty A timeless nightgown, the Françoise is all the things you have come to love about April Cornell. There is really no better way to sleep than being enveloped in one of our 100% wonderful, pure imported cotton nighties. Finely detailed with multiple cutwork embroidered lace front and back as well as on the sleeve and shoulder. White. **NTA5267Y XS-XL \$89**



victorian patchwork cushion A blend of our finest prints in ruffled strips. Front and back shown. Coordinating screened fabric on back. Pencil piping trim. Three button closure. Polyester pillow form included. Imported cotton. **CPRVICT18Y 14x18" \$39**



victorian patchwork pennants 11 pennants. Imported cotton. **PENVICTY 72"L \$29**



victorian patchwork collection

A bevy of April's beautifully tranquil prints and pleasantly pleasing plaids combine to create the old fashioned charm inherent in the Victorian Patchwork Collection. No less than 5 fabrics form the patchwork effect, making these products truly unique to this season.

victorian patchwork tablecloth **TPVICTY 54x54" \$99**

victorian patchwork adult apron **APVICTY \$34**

victorian patchwork kids apron **APKVICTY \$24**



victorian weave throw Snuggle up in incomparable style in one of our sumptuously soft, delightful cotton throw blankets in classic Cornell colors. Imported, woven cotton. Hand-knotted loose fringe. Reversible design. **48x72" THWVICY \$49**



victorian patchwork laundry bags Who would have thought that doing laundry could be such a stylish occasion? Our designers have reinvented the drudgery of housework, complete with fabulous frilly ruffles and vibrantly colorful prints. Drawstring closure. Imported cotton. **BGSMVICTY (below) small 13.5w x 26h" \$24** **BGLGVICTY (left) large 18.5w x 29.5h" \$39**





laurel dress A truly special piece, the Laurel Dress is a fanciful creation that you will not find the likes of elsewhere. Made in a beautiful tulle fabric, this button front style features pleated bursts on the bodice, a gorgeous translucent cap sleeve and stunning contrast detailing all around the collar and neckline. A deep, delicate hem falls to the ankle. Nylon shell with rayon lining. Soft Blue. **DRA5161Y XS-XL \$179**

ashley dress The perfect, impossible to find dress for that fabulous outdoor summer wedding or any special occasion, the Ashley is truly the stuff that dreams are made of. A simple, relaxed form is the quintessential ground for an amazing all-over embroidered net. Stitched down pleats at the center open up to a relaxed flow in the skirt. Imported cotton and nylon blend shell with rayon lining. Ecru. **DRAA5127Y XS-XL \$198 W1-W2 \$208**



evelyn dress I love wearing this style to a gathering with friends and family or even to a cocktail party. No matter where you roam, you will stand out and feel lovely. The wonderful floral print is complemented by a deep asymmetrical hem of softening pink and is mirrored in the flowing neckline. Imported cotton. Ecru. **DRA5174Y XS-XL \$129**



victorian weave in pastel Sets of four.
MPWVICY placemat \$32
NPWVIC18SY napkin \$26
NPESS18Y essential napkin in ecru \$22



victorian patchwork runner 13x72" **RNVICTY** \$39



victorian patchwork placemats & napkins Sets of four.
MPQVICTY placemat \$58
NPVICT20Y napkin \$29
NPESS18Y essential napkin in ecru \$22

victorian patchwork cocktail napkins
NP6VICT10Y set/6 \$16

andrea dress Some brides choose to spend \$5000 on a dress. There's nothing wrong with that. Others decide to spend \$250 and look like a vision of beauty. That is absolutely priceless! Lined with the luxuriously soft rayon shantoon, the exterior shell is a cotton/nylon tulle with an all-over Swiss dot pattern. Embroidered with a floral motif at the bodice. Flutter sleeve. **DRA5040Y XS-XL \$189**

essentially april

floral prints, uncommon touches—all manufactured with loving care. Every piece tells a special story.



lilac tablecloth in ecru TPLILY 36x36" \$24
54x54" \$46 60x90" \$69 60x108" \$89 88" round \$89



lilac placemats & napkins in ecru
Sets of four. MPLILY placemat \$38
NPLIL2oY napkin \$29
NPES18Y essential napkin in lilac \$22



lilac tea towel & little dish cloths in ecru Sets of two.
TTLILY tea towels \$20
TD2LILY little dish \$10



lilac embroidered runner in green 13x72" RNELILY \$29



lilac cushion cover in ecru Front & back shown. CPLIL2oY 20x20" \$24



silk scarf runners A luxurious touch of color to any table top or any spot that needs brightening, our 100% silk runners also double as scarves. Let your imagination loose. *Specify color: smoke, rose, and spring green.* RNSILKY 44x80" \$59



celadon dress The Celadon Dress features one of our gentle toned pallets with a print that whispers of femininity. 100% imported cotton makes for peerless comfort and eight rows of pretty pintucks on the bodice create texture while gentle gathers below the empire waist provide an easy flow to the body of the skirt. Tieback. DRA5o37Y XS-XL \$119



victoria dress A classic Cornell print composed of French inspired roses takes form in the lovely Victoria Dress. Artfully paneled for an easy and relaxed flow it is adorned with delicate pintuck detailing. This item features a cleverly pieced-on lace collar that is wonderfully old-fashioned and unique, an instant collector's item. Imported cotton. DRA5o58Y XS-XL \$98



victorian patchwork bag ensemble

Travel or tote in style with the fabulous Victorian patchwork small duffel bag! These items beautifully quilted on imported screened cotton and embellished with our trademark floral embroidery—all brought to life in a cheerful blend of our finest prints. 100% imported cotton batting. *From left to right:*

small craft bag Sewn-on, reinforced straps. Magnetic closure. One inside pocket. BGCSVICTY approx. 14w x 9.5 h x 5d" \$49

large cosmetic bag Top zipper. BGLGCVICTY approx. 10w x 5.5h x 4.5d" \$25

crossbody bag Adjustable reinforced strap attached with metal rings. Top zipper. Outside pocket. BGCBVICTY 12w x 14h x 3d" \$74

small duffel bag Top zipper. Rounded body. Two reinforced straps. Inside pocket. BGSDVICTY approx. 15w x 9h x 9d" \$64

small cosmetic bag Top zipper. BGSCVICTY approx. 9w x 7h x 2d" \$19

large duffel bag Top zipper. Reinforced, wrap-around straps. BGDBVICTY approx. 20w x 11h x 9d" \$79

Summer Sale—20-30% OFF Selected Apparel & Linens. To order, go to aprilcornell.com or call 888-332-7745.



dauphine tablecloth in periwinkle One of April's favorite prints of the season! Part of our Natural Collection, featuring azo free dyes and unbleached cotton, the Dauphine tablecloth is an item we are proud to offer. The Dauphine is hand crafted in our unique fashion with a lovely print inspired from traditional Indian block printing techniques and pairs perfectly with the Dauphine napkins.

TPDAUY 36x36" **\$24** 54x54" **\$46** 60x90" **\$69** 60x108" **\$89**

Visit one of our fabulous stores

USA

April Cornell Flagship
131 Battery Street
Burlington, VT
802-863-0060

April's Basement

131 Battery Street
Burlington, VT
802-863-0060

April Cornell

60 Main Ave. #2
Ocean Grove, NJ
732-807-4783

April Cornell Outlet

2548 White Mountain Highway
North Conway, NH
603-733-5276

CANADA

La Cache Flagship Store
1353 Greene Avenue
Westmount, QC
514-935-4361

La Cache Outlet

425 Rue Main
Hudson, QC
450-202-0917

La Cache Comox Valley

244 Fifth Street
Courtenay, BC
250-871-0229



Learn more about the world of April Cornell

Hosted by April herself, you can enjoy the AC experience right at your fingertips through our ever-changing video library with April as your personal shopper, describing product fit and detail, how these beautiful pieces are made and more about what goes into the design of an April Cornell dress, blouse and even home linens. **Won't you join us? Click on videos at aprilcornell.com.**

Also, check out our channel on 